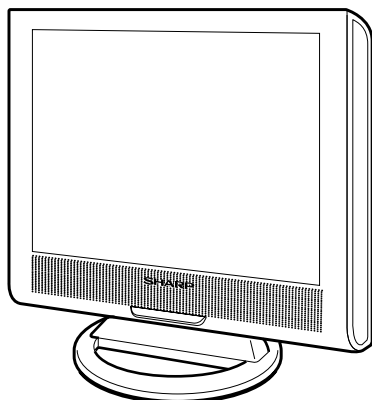


SHARP

SERVICE MANUAL

S31Q9LC-15A2M



LCD COLOUR TELEVISION

MODEL LC-15A2M

In the interests of user-safety (Required by safety regulations in some countries) the set should be restored to its original condition and only parts identical to those specified should be used.

CONTENTS

| | Page | | Page |
|---|------|---|------|
| ● IMPORTANT SERVICE SAFETY PRECAUTION | 2 | ● PRINTED WIRING BOARD ASSEMBLIES | 25 |
| ● SPECIFICATIONS | 3 | ● PARTS LIST | |
| ● OPERATION MANUAL | 4 | ■ ELECTRICAL PARTS | 28 |
| ● REMOVING OF MAJOR PARTS | 6 | MAIN UNIT | 28 |
| ● ADJUSTING PROCEDURE OF EACH SECTION | 8 | TERMINAL UNIT | 33 |
| ● TROUBLE SHOOTING TABLE | 10 | OPERATION UNIT | 34 |
| ● DESCRIPTION OF SCHEMATIC DIAGRAM ... | 13 | R/C RECEIVER UNIT | 34 |
| ● CHASSIS LAYOUT | 14 | ■ CABINET AND MECHANICAL PARTS | 34 |
| ● BLOCK DIAGRAM | 16 | ■ SUPPLIED ACCESSORIES | 36 |
| ● SCHEMATIC DIAGRAM | 18 | ■ PACKING PARTS | 36 |
| | | ● PACKING OF THE SET | 37 |

Example of suffix symbol:

The component parts of this model are partially different depending on their suffix symbols. Before servicing the units, be sure to check the suffix symbol on the model label that is applied on the back of the unit.

SHARP
 LCD COLOUR TV SERIAL NO. X xxxxxxxxx
 MODEL LC-15A2M N1 SHARP CORPORATION
 12V = 2.2A, 27W MADE IN JAPAN

Suffix "X" for Australia

IMPORTANT SERVICE SAFETY PRECAUTION

- Service work should be performed only by qualified service technicians who are thoroughly familiar with all safety checks and the servicing guidelines which follow:

WARNING

1. For continued safety, no modification of any circuit should be attempted.
2. Disconnect AC power before servicing.

CAUTION: FOR CONTINUED PROTECTION AGAINST A RISK OF FIRE REPLACE ONLY WITH SAME TYPE FUSE. F3701 (1.25A, 250V), F3702 (1.25A, 250V), F3751 (2.0A, 250V) FUSE.

BEFORE RETURNING THE RECEIVER (Fire & Shock Hazard)

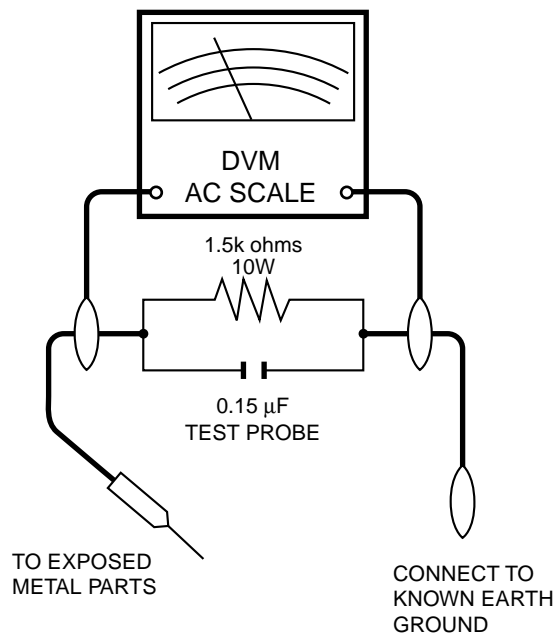
Before returning the receiver to the user, perform the following safety checks:

1. Inspect all lead dress to make certain that leads are not pinched, and check that hardware is not lodged between the chassis and other metal parts in the receiver.
2. Inspect all protective devices such as non-metallic control knobs, insulation materials, cabinet backs, adjustment and compartment covers or shields, isolation resistor-capacitor networks, mechanical insulators and etc.
3. To be sure that no shock hazard exists, check for leakage current in the following manner.
 - Plug the AC cord directly into a 110~240 volt AC outlet, and connect the DC power cable into the receiver's DC jack. (Do not use an isolation transformer for this test).
 - Using two clip leads, connect a 1.5k ohm, 10 watt resistor paralleled by a 0.15 μ F capacitor in series with all exposed metal cabinet parts and a known earth ground, such as electrical conduit or electrical ground connected to an earth ground.

- Use an AC voltmeter having with 5000 ohm per volt, or higher, sensitivity or measure the AC voltage drop across the resistor.
- Connect the resistor connection to all exposed metal parts having a return to the chassis (antenna, metal cabinet, screw heads, knobs and control shafts, escutcheon and etc.) and measure the AC voltage drop across the resistor.

All checks must be repeated with the AC cord plug connection reversed. (If necessary, a nonpolarized adaptor plug must be used only for the purpose of completing these checks.)

Any reading of 35V peak (this corresponds to 0.7 milliamp. peak AC.) or more is excessive and indicates a potential shock hazard which must be corrected before returning the monitor to the owner.



SAFETY NOTICE

Many electrical and mechanical parts in LCD television have special safety-related characteristics.

These characteristics are often not evident from visual inspection, nor can protection afforded by them be necessarily increased by using replacement components rated for higher voltage, wattage and etc.

Replacement parts which have these special safety characteristics are identified in this manual; electrical components having such features are identified by "⚠"

and shaded areas in the **Replacement Parts Lists** and **Schematic Diagrams**.

For continued protection, replacement parts must be identical to those used in the original circuit.

The use of a substitute replacement parts which do not have the same safety characteristics as the factory recommended replacement parts shown in this service manual, may create shock, fire or other hazards.

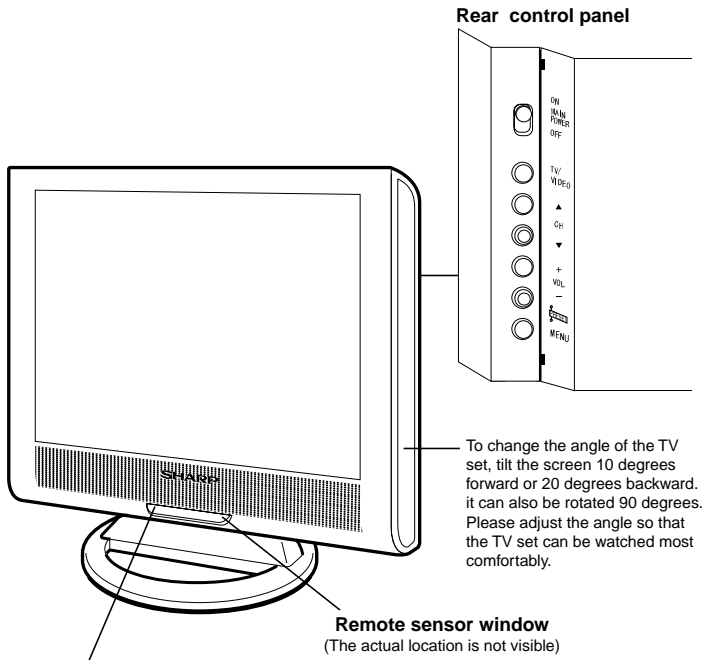
Specifications

| | |
|-------------------------------|---|
| Power Input | DC 12V (Receiver) AC 110-240V (AC Adapter) |
| Power Consumption | 27 W (Connected to DC 12V) |
| LCD Panel Size | 15" TFT LCD |
| Number of Pixels | 921,600 pixels (VGA) |
| Audio Amplifier | (Front) 0.6 W + 0.6 W (at 10% distortion) (Rear) 2.5 W |
| Speakers | |
| Size | (Front) 3 × 4 cm (2 pcs) (Rear) ϕ 65 mm (1 pc) |
| Voice Coil Impedance | (Front) 32 ohm (Rear) 6 ohm |
| Antenna Input Impedance | 75 ohm unbalanced |
| Video Colour Systems | PAL/NTSC/SECAM |
| Receiving Frequency | |
| VHF Channels | 44,25 thru 464,25 MHz |
| UHF Channels | 471,25 thru 863,25 MHz |
| Weight | 3.7 kg w/o accessories |
| Accessories | R/C, Batteries, AC Adapter, AC Cord, Operation Manual, Cable Clamp |

Specifications are subject to change without prior notice.

Operation Manual

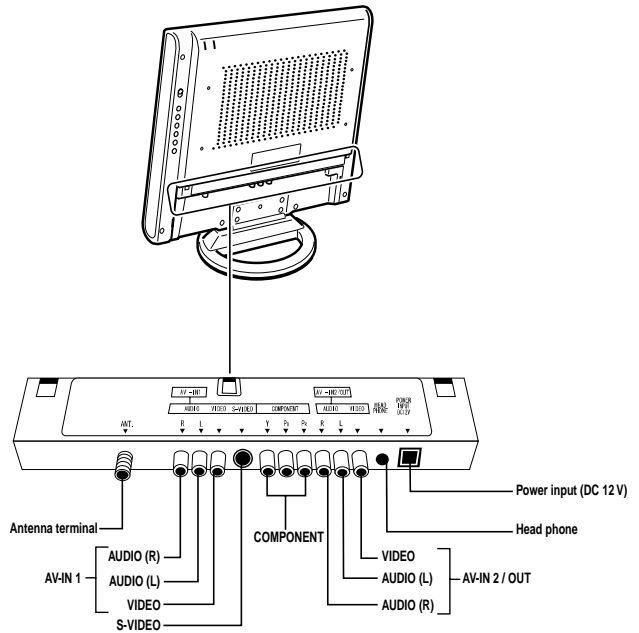
Main unit (front view)



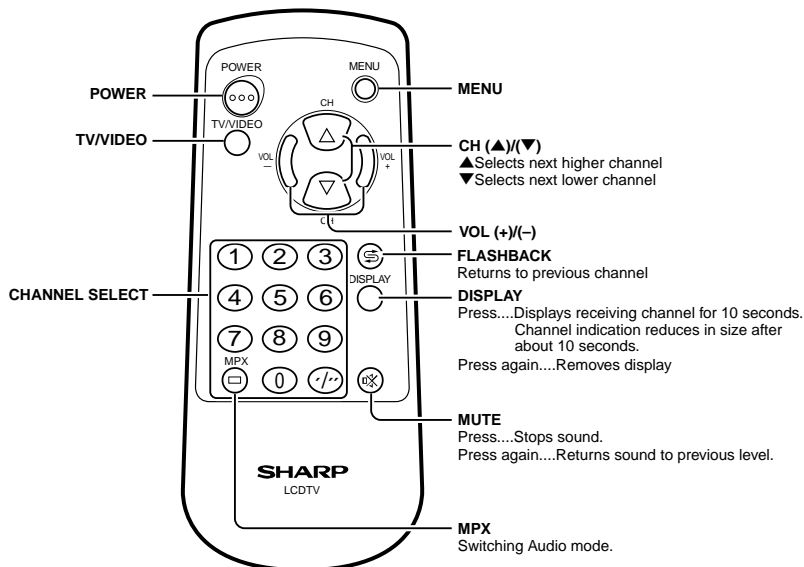
Power/standby indicator

A green indicator lights when the power is on and a red indicator lights when in the standby mode (the indicator will not light when the main power is off).

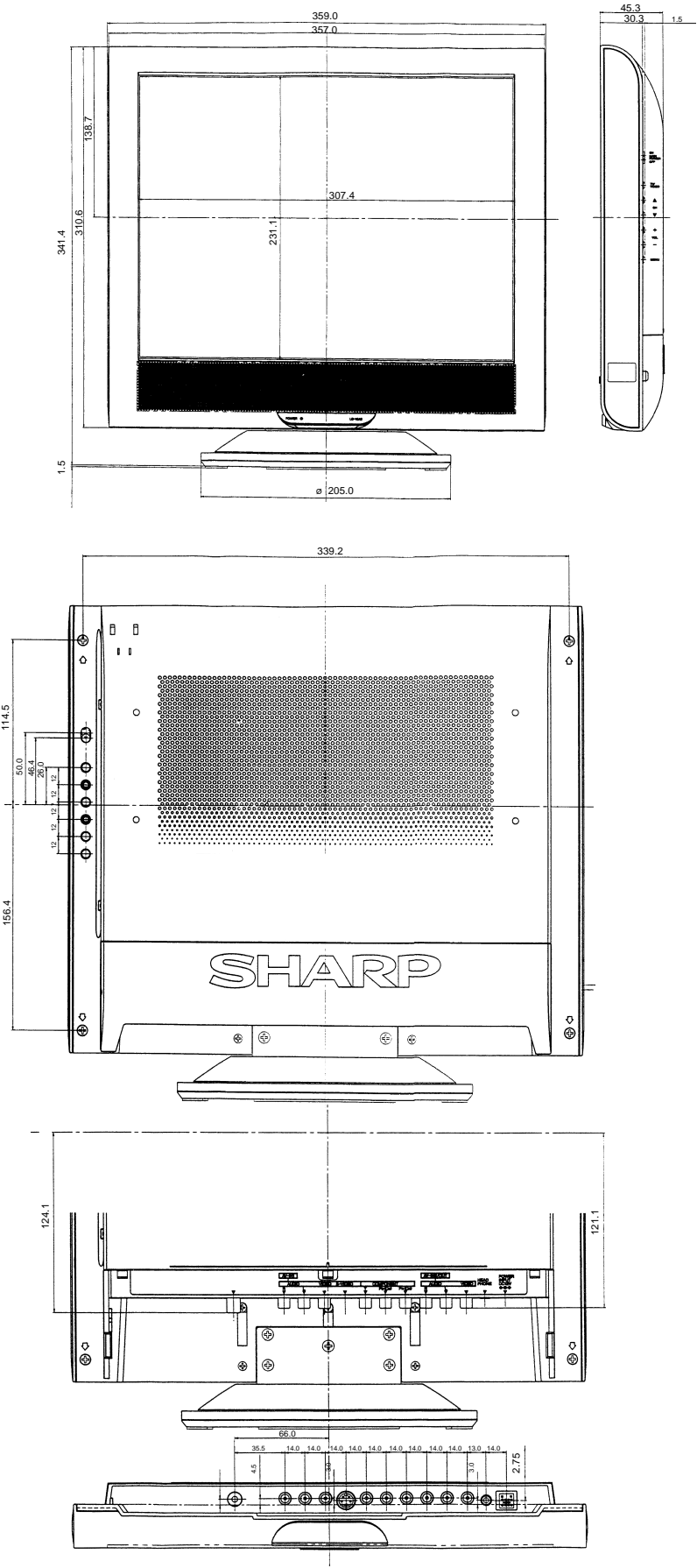
Main unit (rear view)



Remote control



Dimensions



Units: mm

REMOVING OF MAJOR PARTS

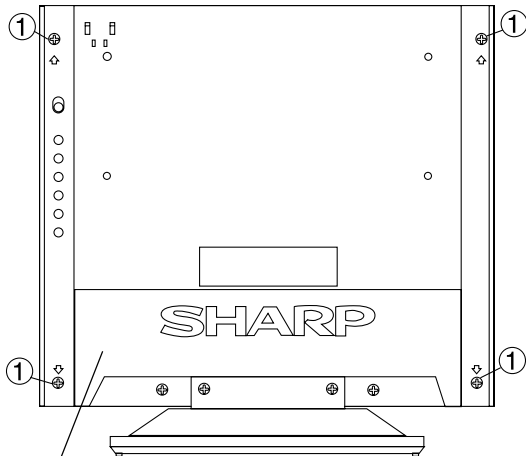
1. Insert your finger into the center of the terminal cover and pull it toward you to detach the terminal cover.
2. Remove the four screws ① and one screw ②.
3. Open the cabinet B by approx. 45° from the bottom of the cabinet (stand side).
4. Remove the lead wire from the cable clamp ③.
5. Remove the power connector ④.
6. Remove the connector ⑤ from the light reception unit.
7. Remove the lead wire from the cable clamp ⑥.
8. Remove the speaker connector ⑦.
9. Remove the FFC from the FFC connector ⑧ on the Main Unit.
10. Remove the connector ⑨ from the Operation Unit.
11. Remove the right and left speaker connectors ⑩ on the Terminal Unit.

<<Disassembly of the Main Unit>>

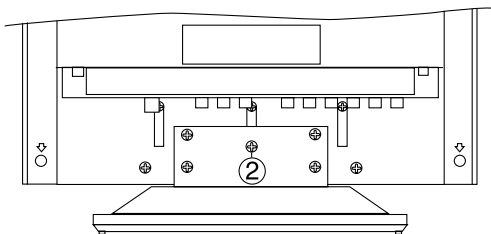
1. Disconnect the flexible cable connectors ⑪ and ⑫ from the LCD panel.
2. Disconnect the cable connectors ⑬ and ⑭ from the fluorescent lamp.
3. Remove the four screws ⑮.

<<Disassembly of the Terminal Unit>>

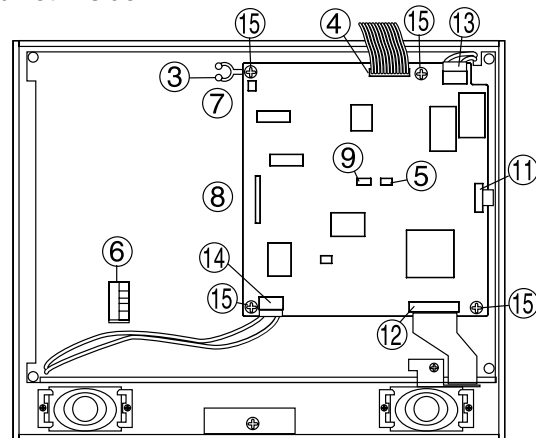
1. Remove the cover ⑰.
2. Remove the five screws ⑱.
3. Remove the two screws ⑲. Take them out of the cabinet holes.



Terminal Cover

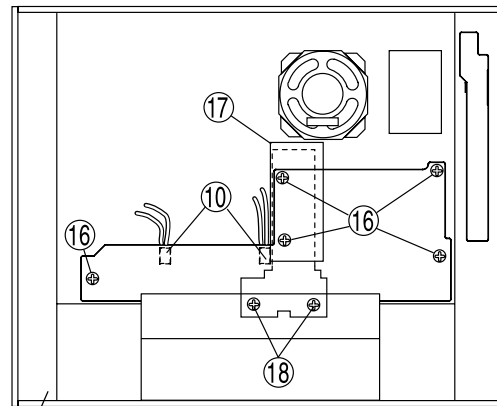


<<Cabinet A side>>



Cabinet A

<<Cabinet B side>>

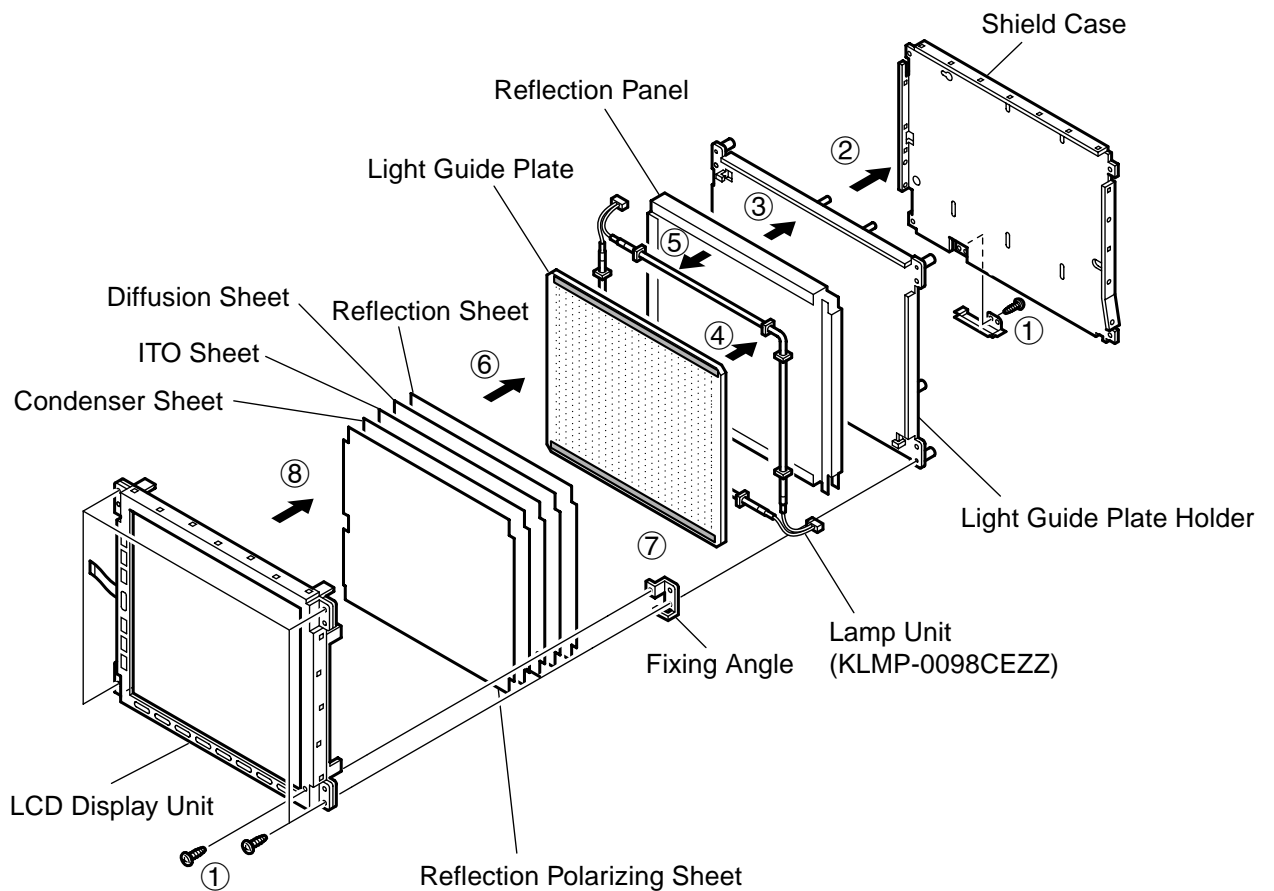


Cabinet B

- Caution for handling the LCD panel
1. Work in a clean room. (Humidity: 50% or more)
 2. A worker must wear arm bands.
 3. Work on a conductive mat.
 4. Do not expose the unit to shock such as fall or vibration.

<<Disassembly of LCD Panel>>

1. Remove the six LCD unit fixing screws.
2. Remove the shield case.
3. Remove the light guide panel holder.
4. Remove the reflection panel.
5. Remove the lamp unit.
6. Remove the light guide plate.
7. Remove the fixing angle.
8. Remove the ITO sheet, diffusion sheet and the reflection polarizing sheet.



ADJUSTING PROCEDURE OF EACH SECTION

The best adjustment is made before shipping. If any position deviation is found or after part replace is performed, adjust as follows.

1. Preparation for Adjustments

(1) Use the exclusive-use AC adapter or stable DC power supply.

AC adapter: UADP-0210CEZZ

DC power supply: 12 ±0.5V

2. Special mode setting procedure

(1) After initialization of E²PROM the mode is changed to the adjustment mode.

[Procedure]

Connect TP2001 and TP2002 to GND, and turn on the power.

[Description]

- The initialization of microprocessor is as follows.
- AV position, DAC data, G/A data, sound processor data and video chroma data adjustment values are taken as defaults.

(2) Adjustment mode

[Procedure]

Make a short-circuit between TP2001 and GND, and turn on the power.

Or make a short-circuit TP2002 to GND, and turn on the power.

Or while holding down the [TV/VIDEO] and [MENU] keys at the same time, turn on the main power, and simultaneously press the (inspection process) [CH ▼] and [VOL-] keys to change the mode to the adjustment mode.

[Description]

The manual adjustment or adjustment through communication with the automatic machine is performed.

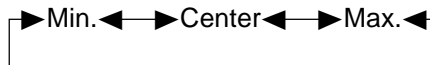
(3) Inspection mode

[Procedure]

While holding down the [TV/VIDEO] and [MENU] keys at the same time, turn on the power.

[Description]

- In the ordinary menu select "VIDEO ADJUST" with the [CH] key, and decide with the [VOL] key. Then select "PICTURE", "TINT (only NTSC)", "COLOR", "BLACK LEVEL", "SHARPNESS", "RED-BLUE", "GREEN" and "COLOR SYSTEM" with the [CH] key, and decide with the [VOL] key. After that, adjust values with the [VOL] key.
- VOLUME, PICTURE, TINT (only NTSC), COLOR, BLACK LEVEL, SHARPNESS, RED-BLUE, GREEN change as follows.



(4) Shipping setting mode

[Procedure]

While holding down the [TV/VIDEO] and [MENU] keys at the same time, turn on the main power, and simultaneously press the (inspection process) [CH ▲] and [VOL+] keys to change the mode to the adjustment mode.

[Description]

User adjustment and other values are taken as defaults.

If TV is indicated as SETTING COMPLETE, setting has been completed.

3. Cancel of special mode

Turn off the main power.

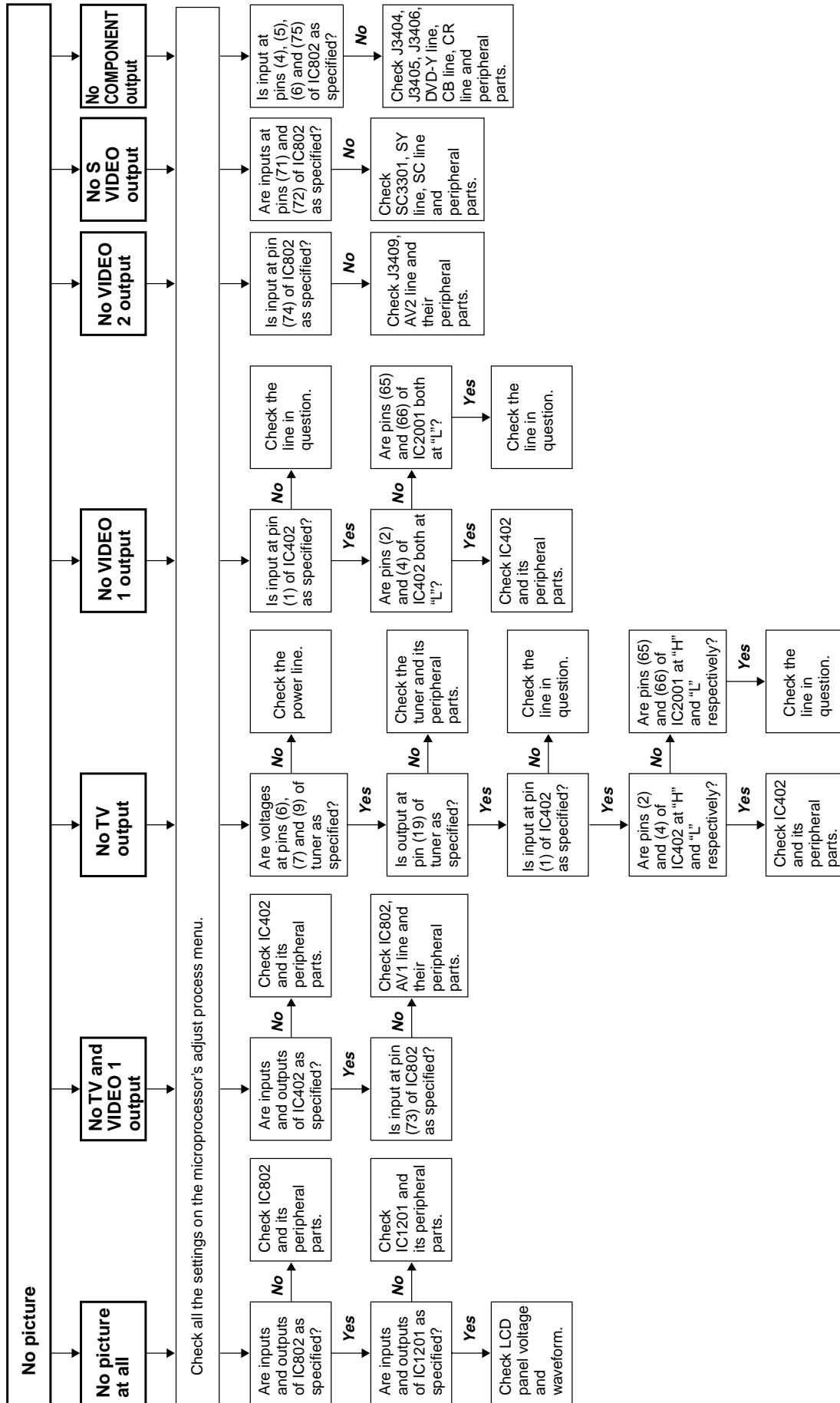
4. Adjustments

| | Adjustment | Adjusting conditions | Adjusting method |
|---|---|---|---|
| 1 | B+ Adjustment (If E ² PROM is replaced)(IC2004) | 1. Connect the DC voltmeter to pin 49 of SC401. 2. Go to the adjustment mode. | 1. Adjust the "B+ Adj" value to 5.0V ±0.02V with [VOL+] or [VOL-] Key. * The colour of "B+ Adj" must be yellow. |
| 2 | Model setup (If E ² PROM is replaced) (IC2004) | 1. Go to the adjustment mode. | 1. Select "MODEL" with [MENU] key and adjust to "A2U" with [VOL+] or [VOL-] key. * The colour of "MODEL" must be yellow. |
| 3 | Counter-bias adjustment | 1. Receive a B/W channel. 2. Go to the adjustment mode. 3. Select the "COM BIAS" with [MENU] key. | 1. Adjust "COM BIAS" to the darkest creen with [VOL+] and [VOL-] key. * The colour of "COM BIAS" must be yellow. |

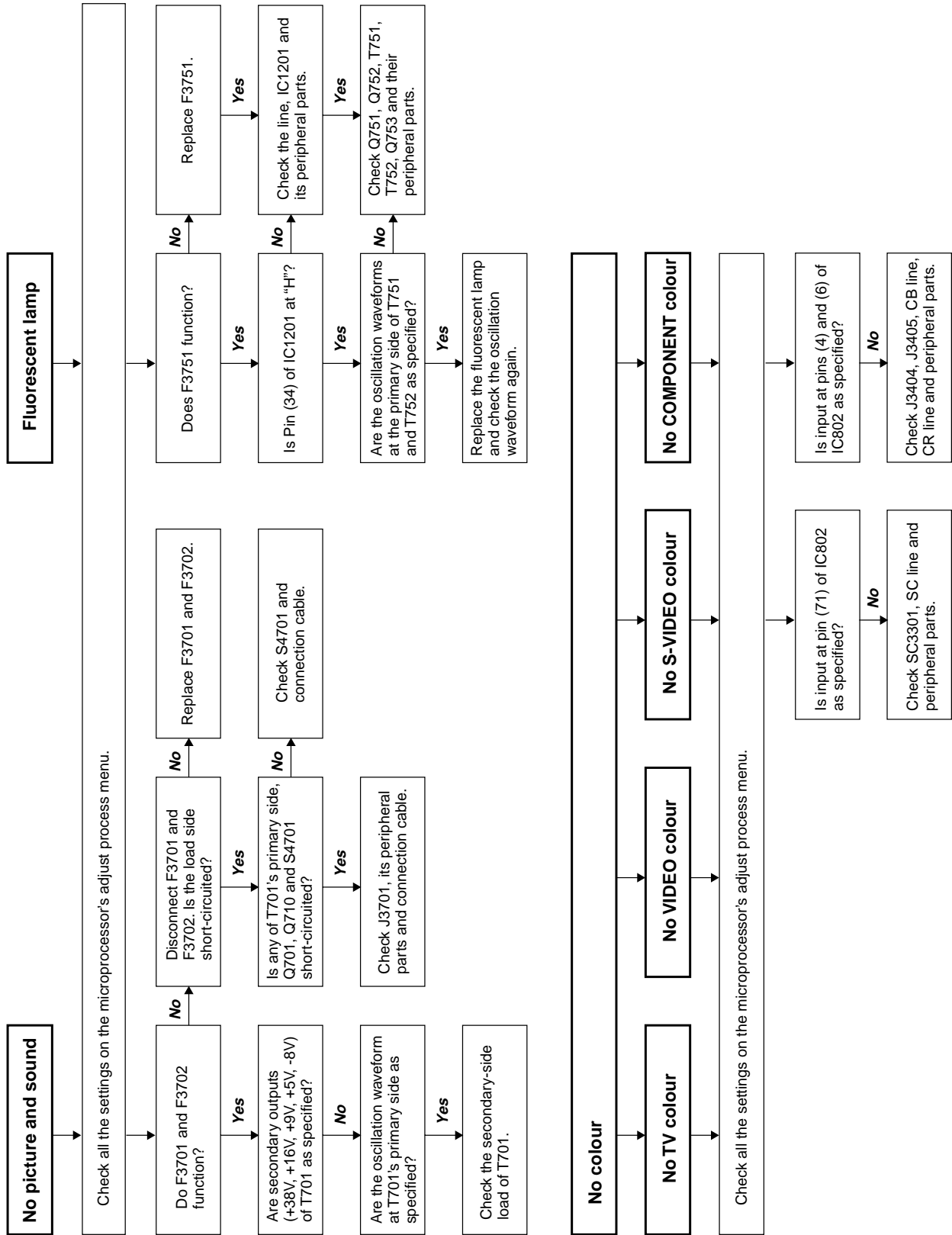
5. Shipping setting list

| | |
|--------------------------|---------|
| Channel | 1ch |
| Skip Data | Off |
| Volume | 20 |
| Contrast | 30 |
| Tint | 0 |
| Colour | 0 |
| Black Level | 0 |
| SHARP | 0 |
| RED-BLUE | 0 |
| GREEN | 0 |
| TV Colour System | Auto |
| AV Colour System | Auto |
| Language | English |
| Blue Screen (Back) | Off |
| Sleep Timer | None |
| NICAM | On |
| IGR | On |
| Brightness | Bright |
| Auto Power Off | Off |
| Upside | Normal |
| Right/Left | Normal |
| AV1 | Normal |
| AV2 IN/OUT | In |

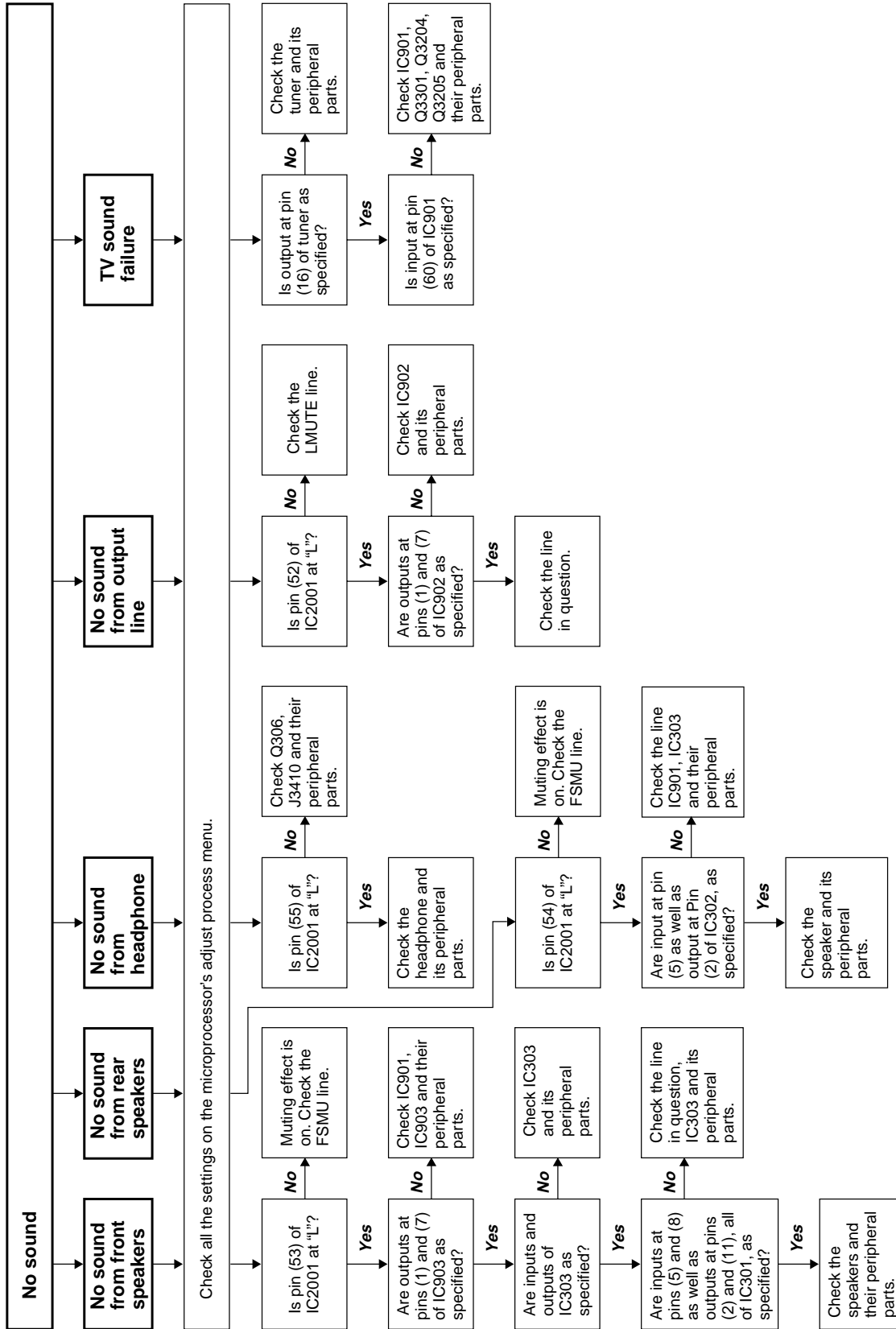
TROUBLE SHOOTING TABLE



TROUBLE SHOOTING TABLE (Continued)



TROUBLE SHOOTING TABLE (Continued)



DESCRIPTION OF SCHEMATIC DIAGRAM

VOLTAGE MEASUREMENT CONDITION:

1. When the exclusive-use AC adapter is used, the colour bar signal of colour bar generator for service is input to get the normal screen. When the audio is minimized, the voltage value is measured with the 20 k Ω /V tester.

WAVEFORM MEASUREMENT CONDITION:

1. When the exclusive-use AC adapter is used, the colour density, lightness and colour hue are set to the center position, and the signal of colour bar generator for service is observed to get waveform.

INDICATION OF RESISTOR & CAPACITOR:

RESISTOR

1. The unit of resistance " Ω " is omitted.
(K=k Ω =1000 Ω , M=M Ω).
2. All resistors are $\pm 5\%$, unless otherwise noted.
(J= $\pm 5\%$, F= $\pm 1\%$, D= $\pm 0.5\%$)
3. All resistors are Carbon type, unless otherwise noted.
 ©: Solid Ⓞ: Cement
 Ⓢ: Oxide Film Ⓣ: Special
 Ⓝ: Metal Coating

CAPACITOR

1. All capacitors are mF, unless otherwise noted.
(P=pF=mmF).
2. All capacitors are Ceramic type, unless otherwise noted.
 (ML) : Mylar (TA) : Tantalum
 (PF) : Polypro Film (ST) : Styrol

CAUTION:

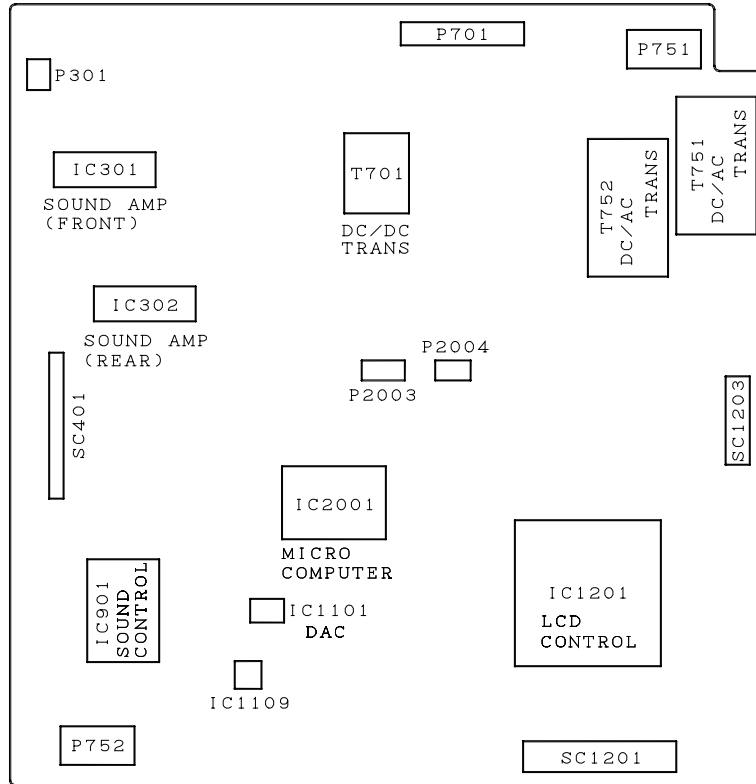
This circuit diagram is original one, therefore there may be a slight difference from yours.

IMPORTANT SAFETY NOTICE:

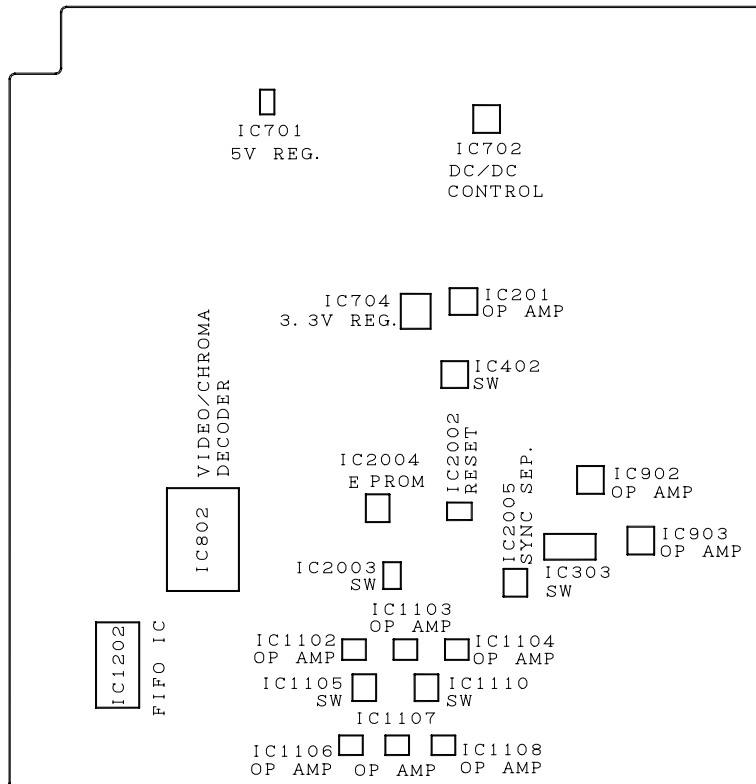
PARTS MARKED WITH "⚠" () ARE IMPORTANT FOR MAINTAINING THE SAFETY OF THE SET. BE SURE TO REPLACE THESE PARTS WITH SPECIFIED ONES FOR MAINTAINING THE SAFETY AND PERFORMANCE OF THE SET.

CHASSIS LAYOUT

MAIN Unit (Side-A)



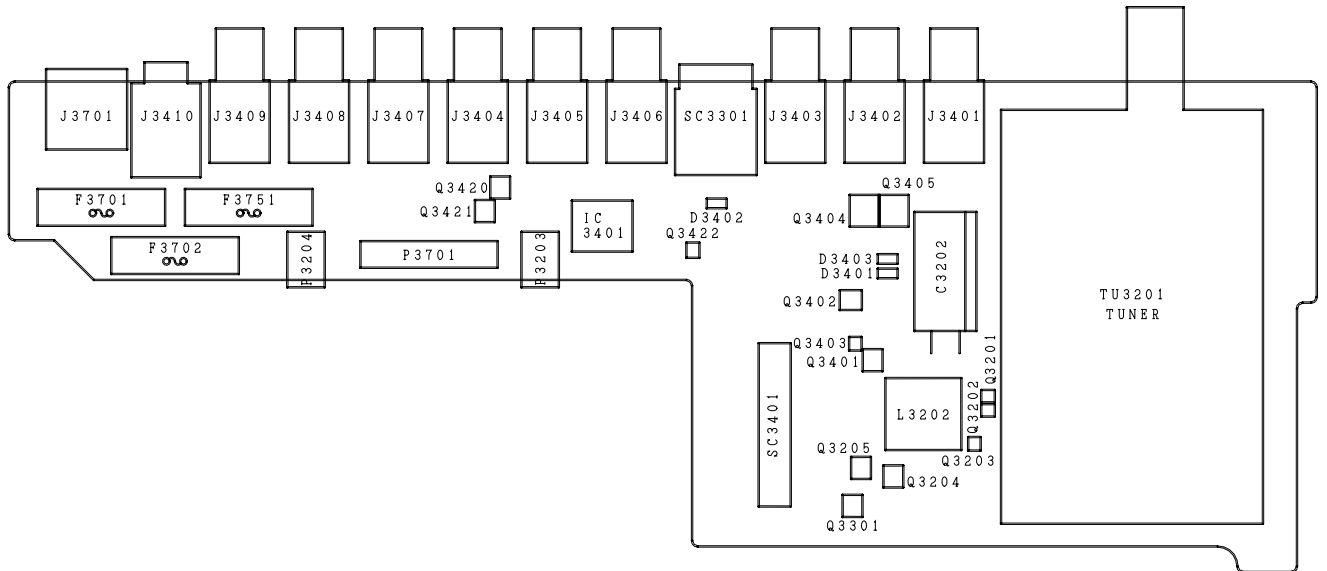
MAIN Unit (Side-B)



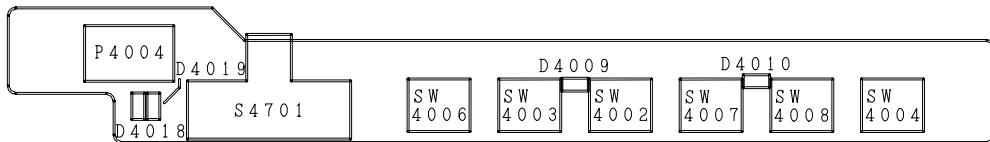
1 2 3 4 5 6

H
G
F
E
D
C
B
A

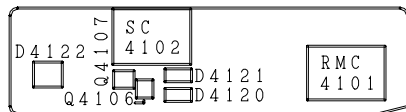
TERMINAL Unit



OPERATION Unit



R/C RECEIVER Unit



1

2

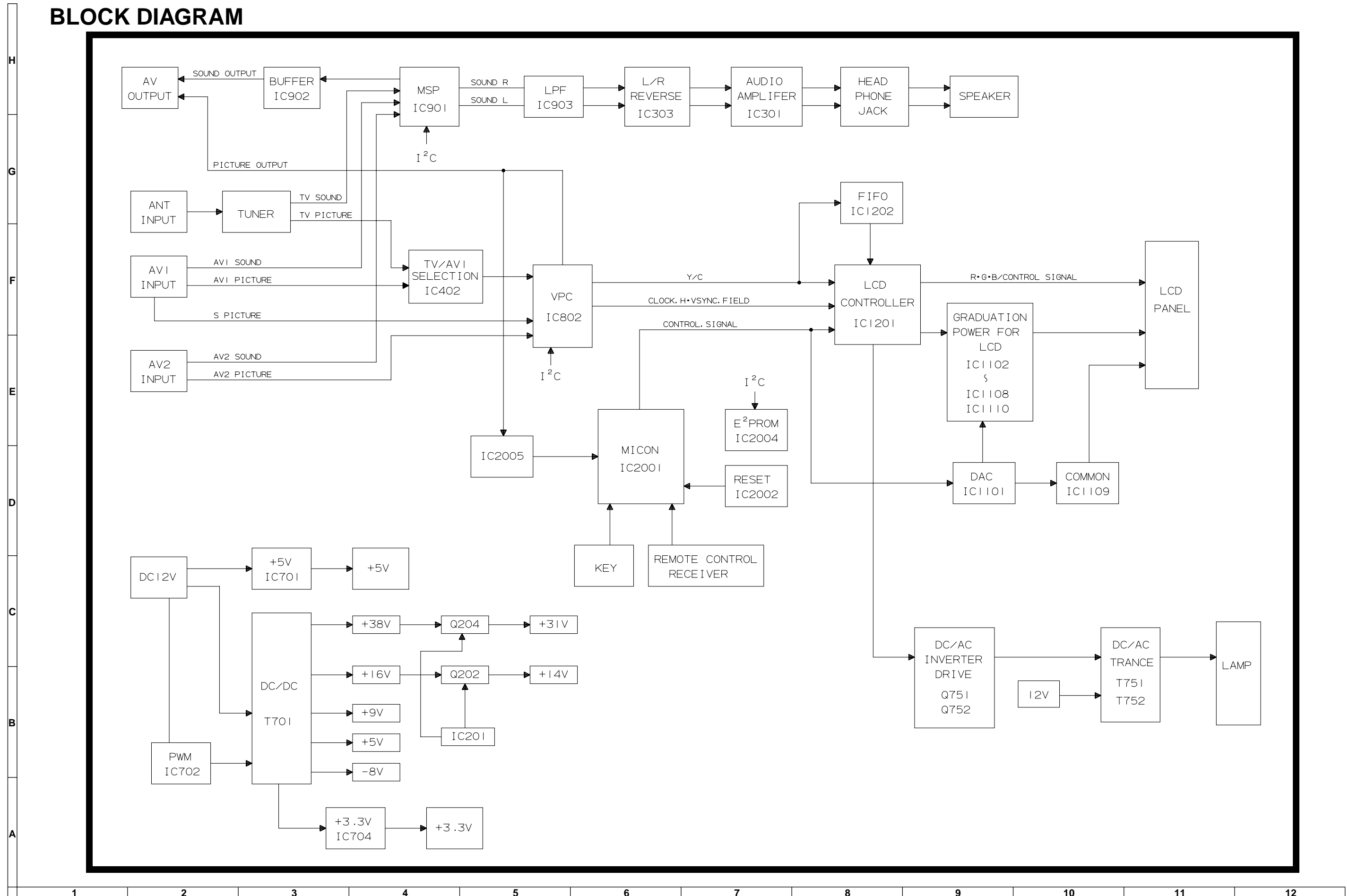
3

4

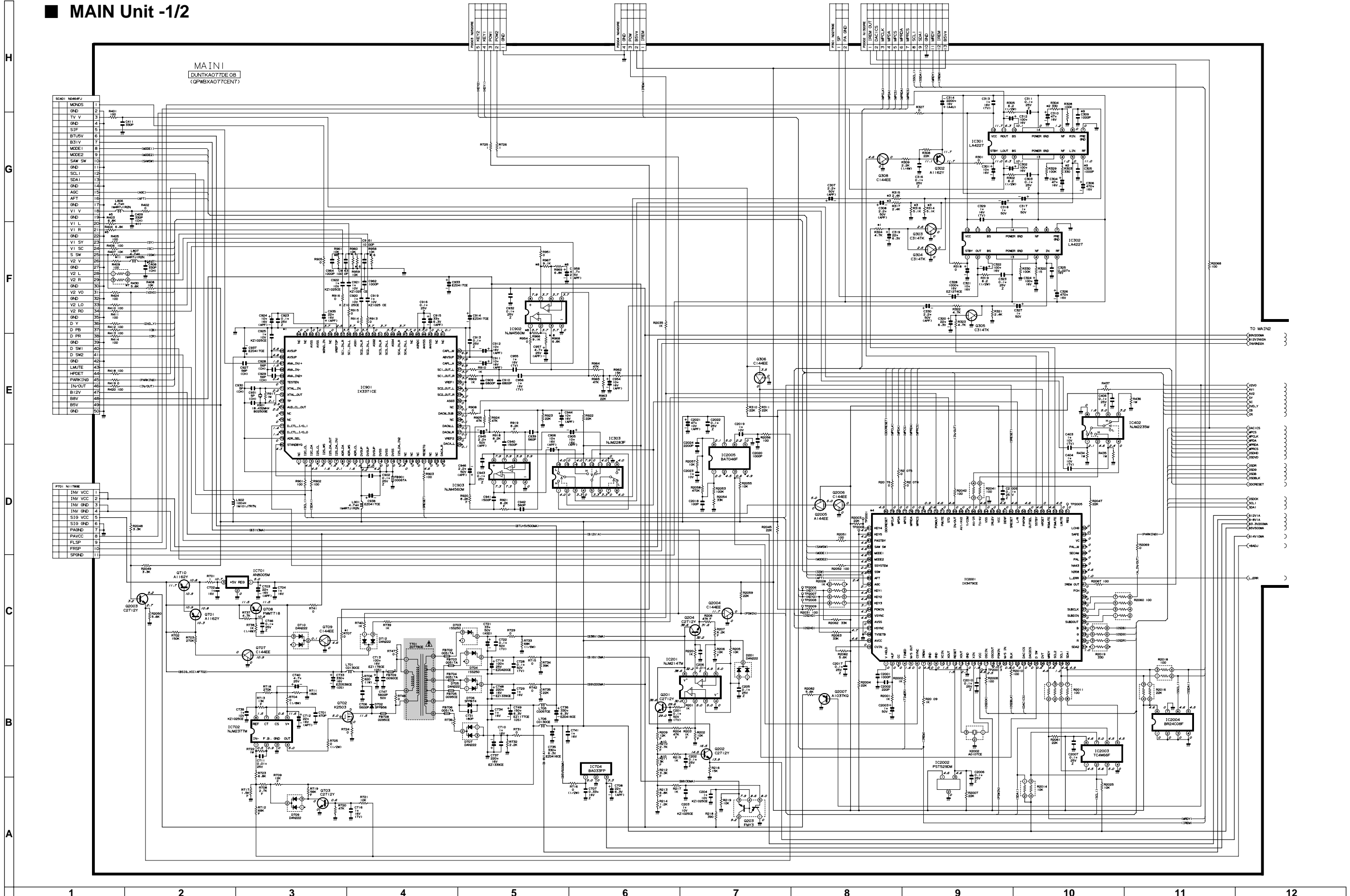
5

6

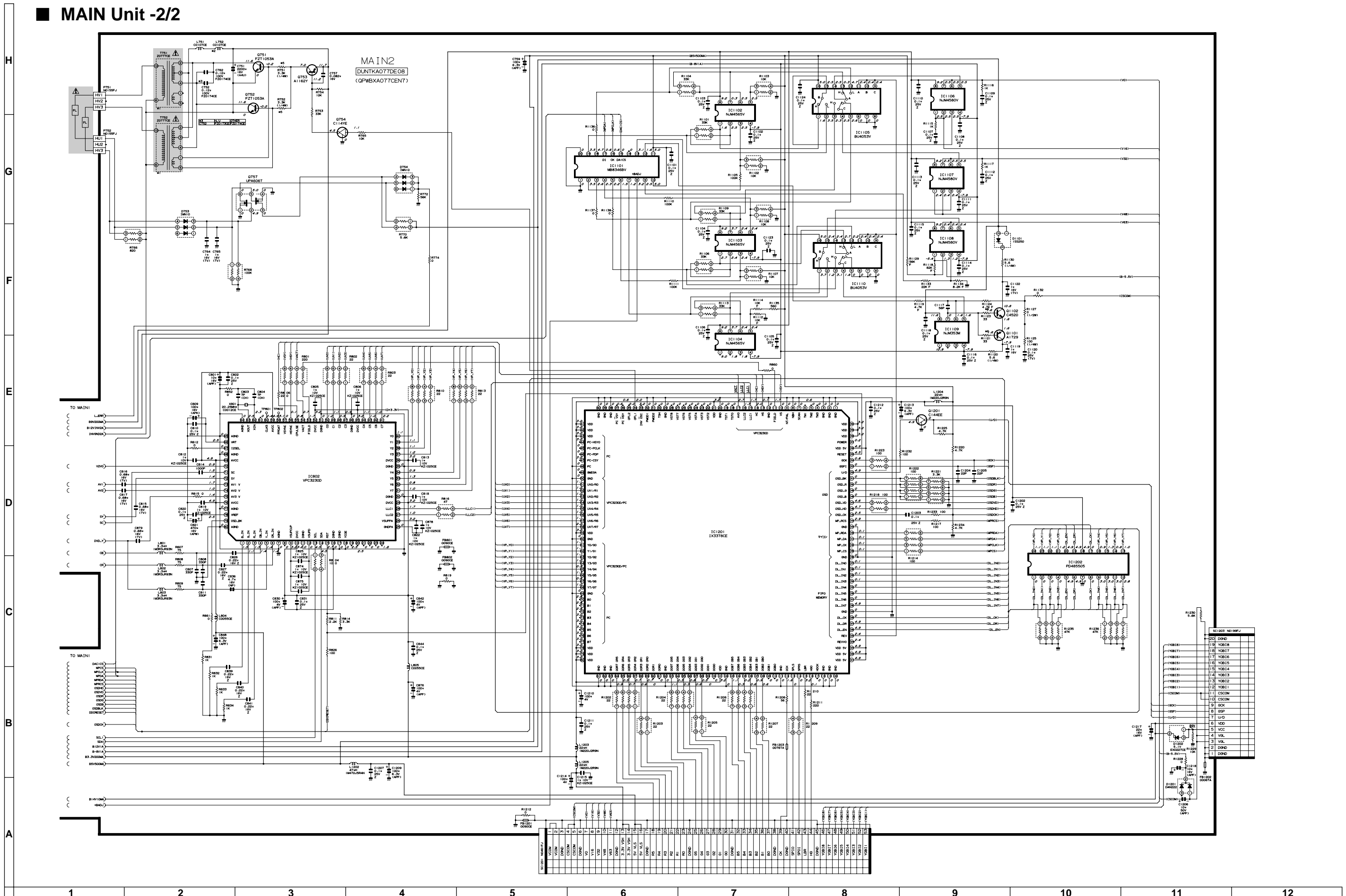
BLOCK DIAGRAM



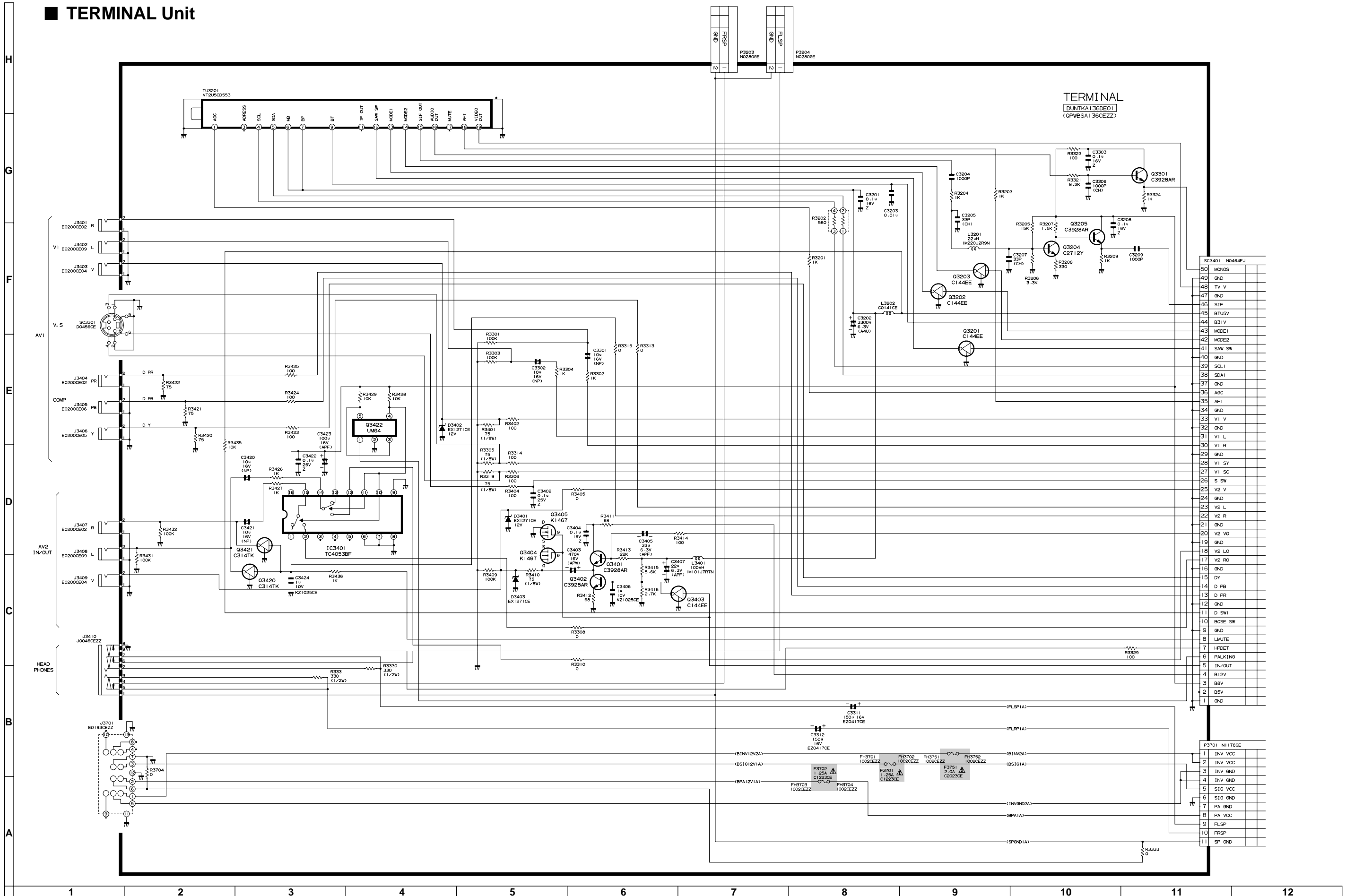
MAIN Unit -1/2



MAIN Unit -2/2

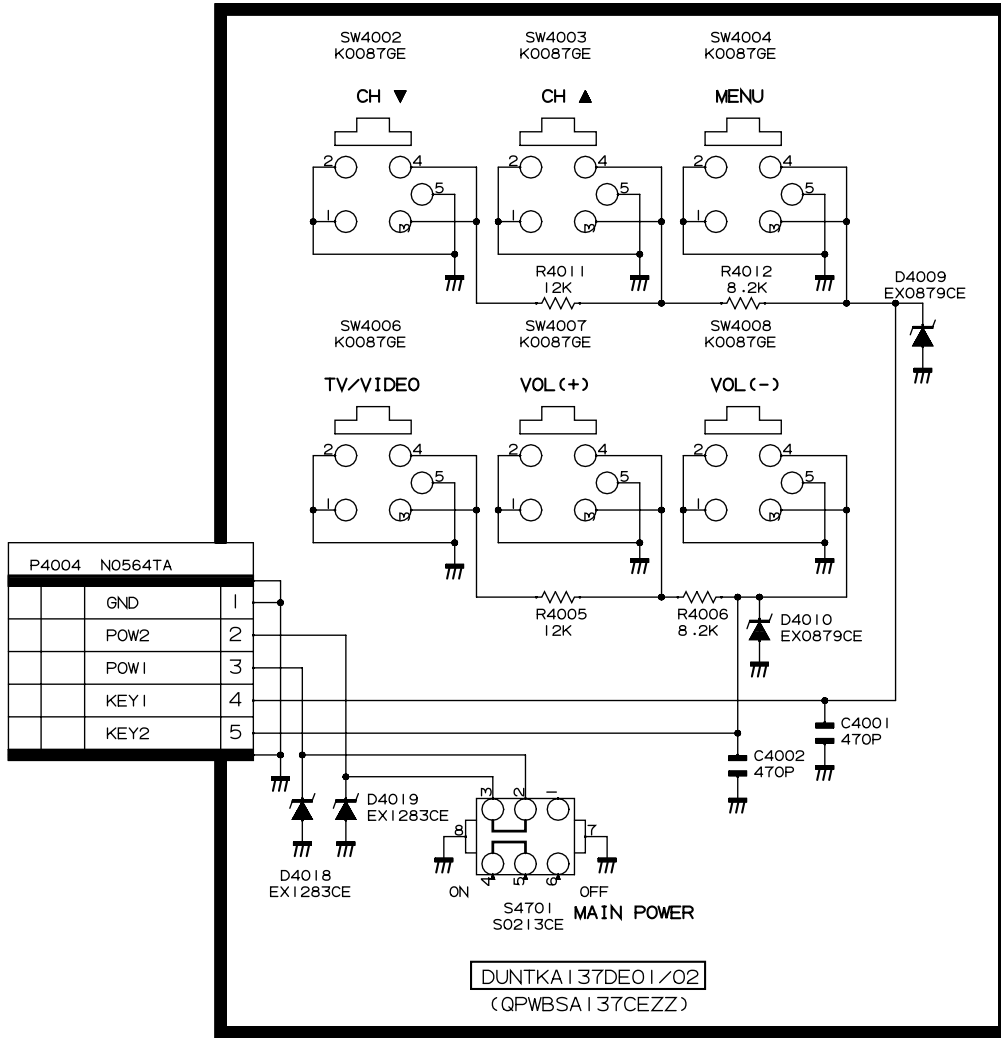


■ TERMINAL Unit

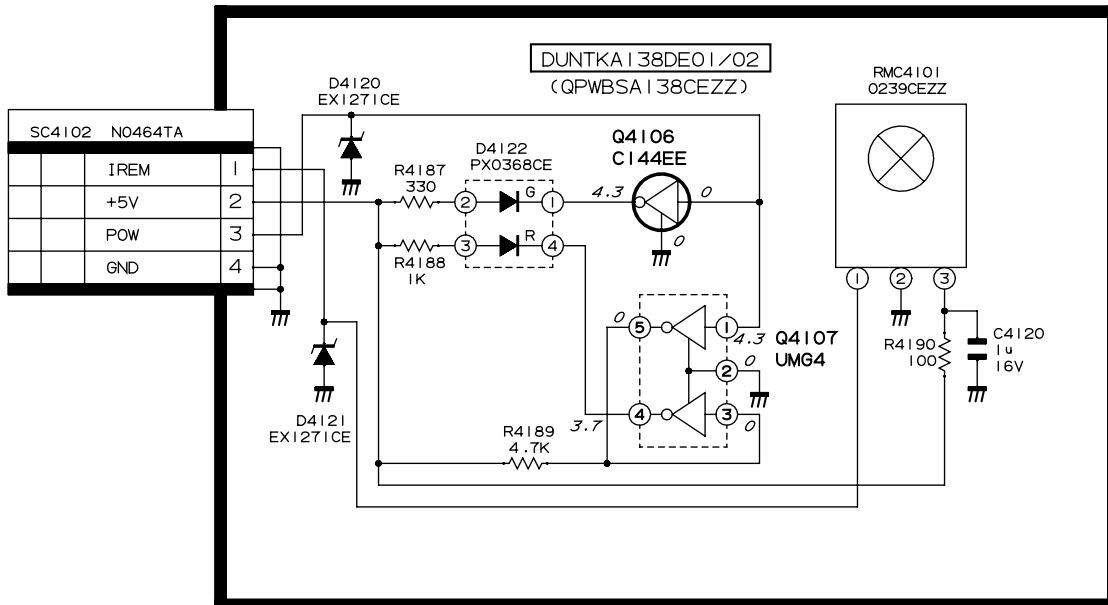


OPERATION and R/C RECEIVER Unit

OPERATION



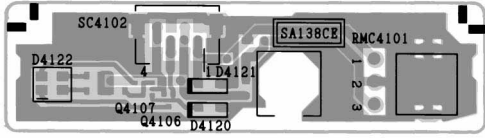
R/C RECEIVER



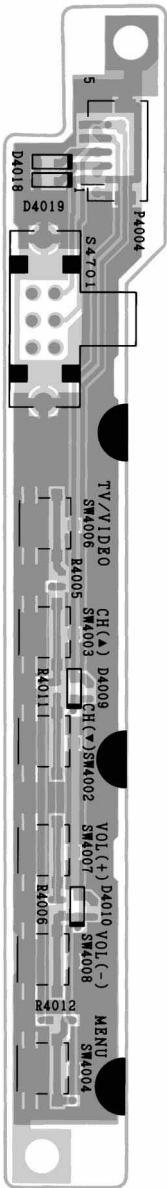
PRINTED WIRING BOARD ASSEMBLIES

H
G
F
E
D
C
B
A

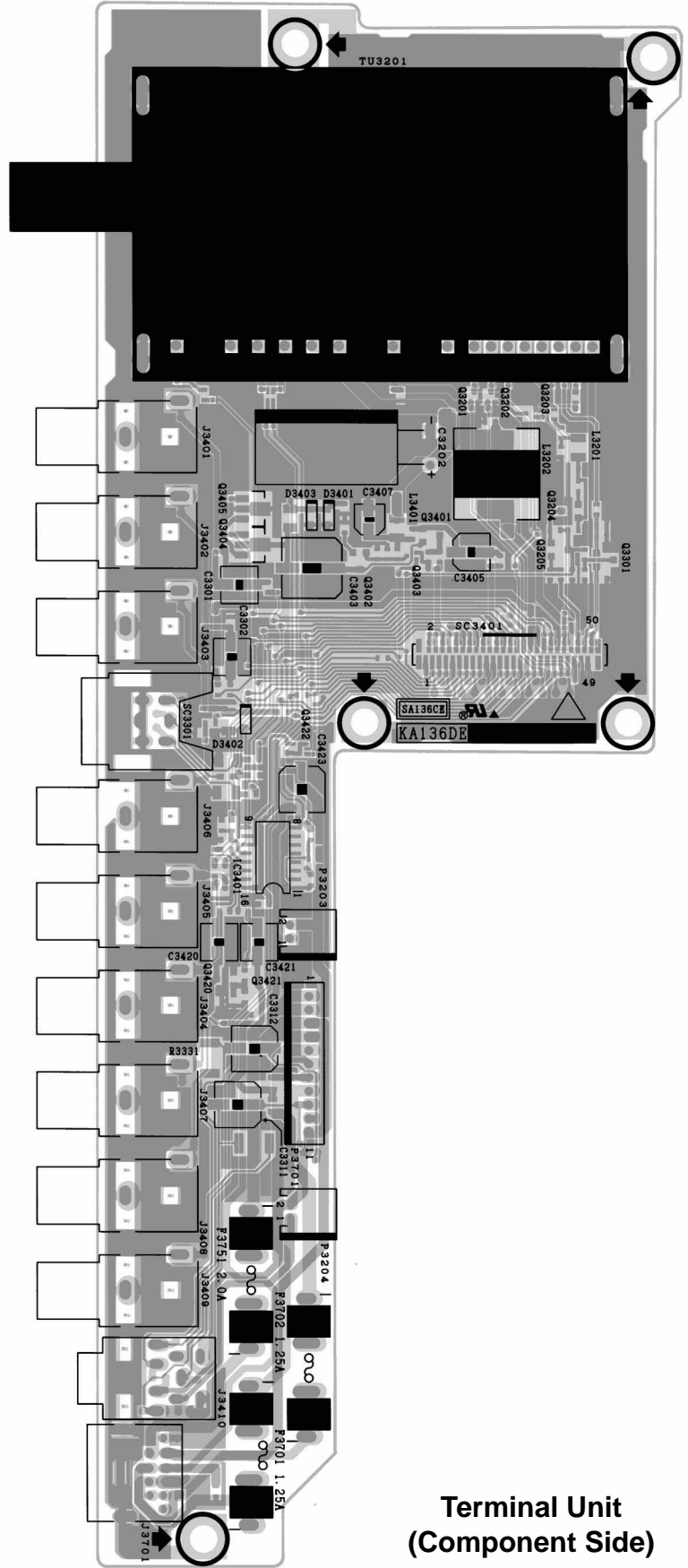
1 2 3 4 5 6



R/C Receiver Unit
(Component Side)

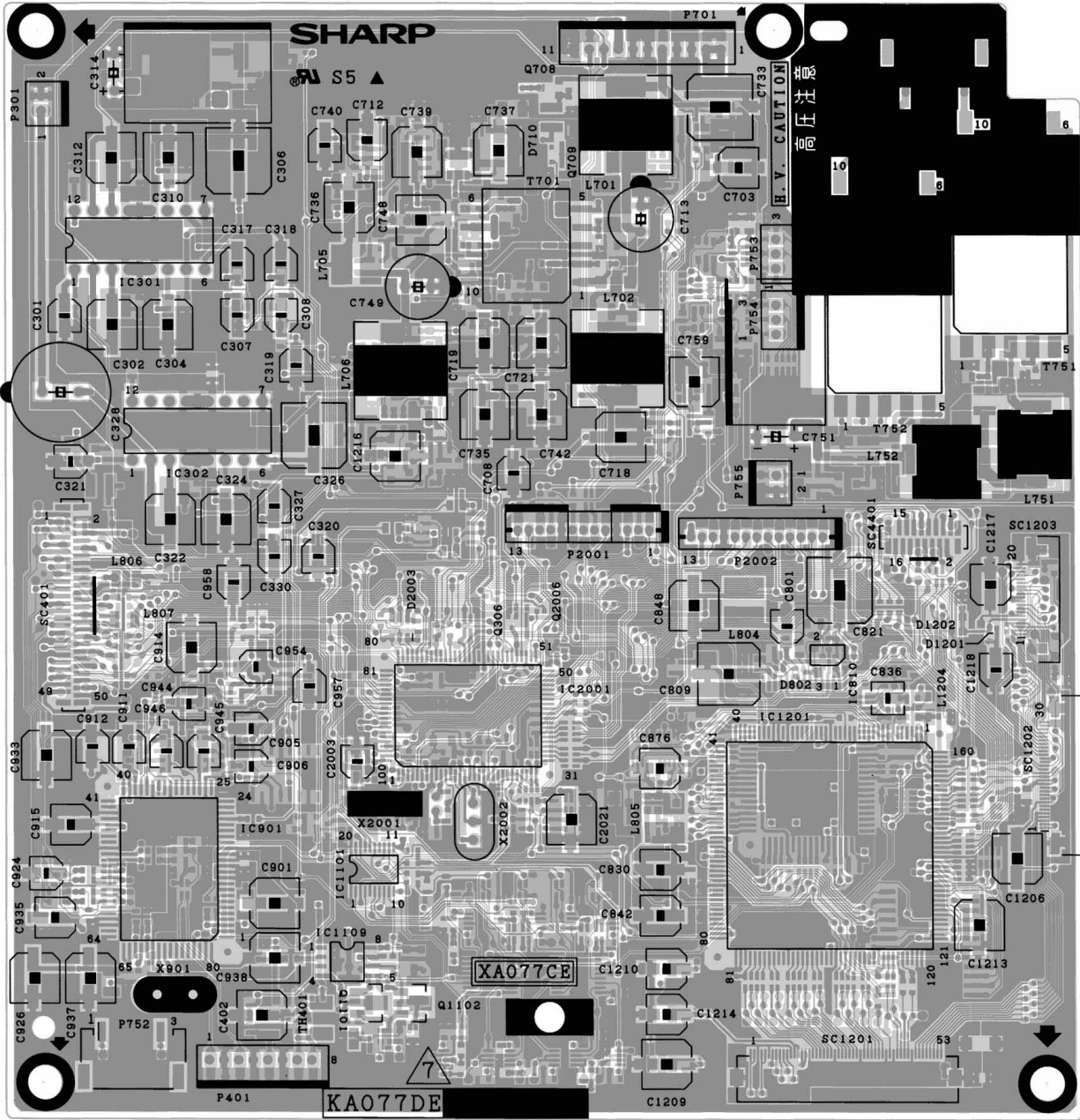


Operation Unit (Component Side)



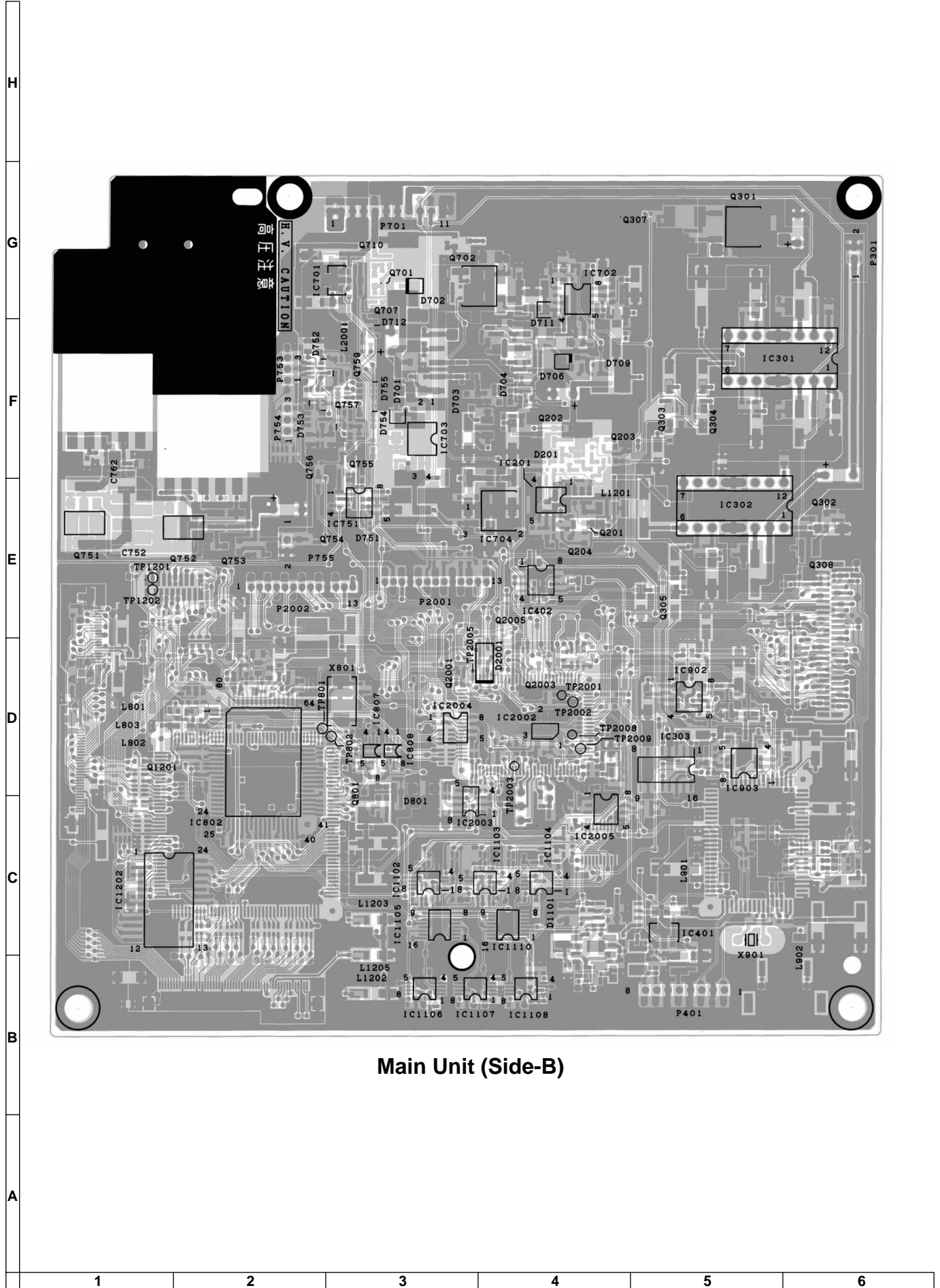
Terminal Unit
(Component Side)

H
G
F
E
D
C
B
A



Main Unit (Side-A)

1 2 3 4 5 6



Main Unit (Side-B)

PARTS LIST

PARTS REPLACEMENT

Replacement parts which have these special safety characteristics identified in this manual: electrical components having such features are identified by "△" in the Replacement Parts Lists.

The use of a substitute replacement part which does not have the same safety characteristics as the factory recommended replacement parts shown in this service manual may create shock, fire or other hazards.

"HOW TO ORDER REPLACEMENT PARTS"

To have your order filled promptly and correctly, please furnish the following informations.

- | | |
|-----------------|----------------|
| 1. MODEL NUMBER | 2. REF. NO. |
| 3. PART NO. | 4. DESCRIPTION |

MARK ★: SPARE PARTS-DELIVERY SECTION

| Ref. No. | Part No. | ★ | Description | Code |
|----------|----------|---|-------------|------|
|----------|----------|---|-------------|------|

PRINTED WIRING BOARD ASSEMBLIES (NOT REPLACEMENT ITEM)

| | | | |
|---------------|---|-------------------|---|
| DUNTKA077FE08 | - | MAIN Unit | — |
| DUNTKA136DE02 | - | TERMINAL Unit | — |
| DUNTKA137DE02 | - | OPERATION Unit | — |
| DUNTKA138DE02 | - | R/C RECEIVER Unit | — |

LCD PANEL

NOTE: THE PARTS HERE SHOWN ARE SUPPLIED AS AN ASSEMBLY BUT NOT INDEPENDENTLY.

| | | | |
|----------------|---|-----------------|----|
| RLCDDT0058CEZZ | J | LCD Module Unit | DQ |
|----------------|---|-----------------|----|

DUNTKA077FE08 MAIN UNIT

INTEGRATED CIRCUITS

| | | | | |
|--------|---------------|---|----------------|----|
| IC201 | VHiNJM2147M-1 | J | NJM2147M-TE1 | AF |
| IC301 | VHiLA4227/-1 | J | LA4227 | AG |
| IC302 | VHiLA4227/-1 | J | LA4227 | AG |
| IC303 | VHiNJM2283F-1 | J | NJM2283M | AF |
| IC402 | VHiNJM2235M-1 | J | NJM2235M | AE |
| IC701 | VHiAN8005M/-1 | J | AN8005M | AD |
| IC702 | VHiNJM2377M-1 | J | NJM2377M | AK |
| IC704 | VHiBA033FP/-1 | J | BA033FP-E2 | AG |
| IC802 | VHiVPC3230D-1 | J | VPC3230D-QA-B2 | BG |
| IC901 | RH-iX3371CEZZ | J | MSP3410G-QA-B5 | BD |
| IC902 | VHiNJM4560M-1 | J | NJM4560M | AG |
| IC903 | VHiNJM4560M-1 | J | NJM4560M | AG |
| IC1101 | VHiMB8346BV-1 | J | MB88346BPFV | AN |
| IC1102 | VHiNJM4565V-1 | J | NJM4565V | AF |
| IC1103 | VHiNJM4565V-1 | J | NJM4565V | AF |
| IC1104 | VHiNJM4565V-1 | J | NJM4565V | AF |
| IC1105 | VHiBU4053V/-1 | J | BU4053BCFV-E2 | AE |
| IC1106 | VHiNJM4580V-1 | J | NJM4580V | AE |
| IC1107 | VHiNJM4580V-1 | J | NJM4580V | AE |
| IC1108 | VHiNJM4580V-1 | J | NJM4580V | AE |
| IC1109 | VHiNJM353M/-1 | J | NJM353M | AG |
| IC1110 | VHiBU4053V/-1 | J | BU4053BCFV-E2 | AE |
| IC1201 | RH-iX3378CEZZ | J | LR38797 | AY |

| Ref. No. | Part No. | ★ | Description | Code |
|----------|---------------|---|---------------|------|
| IC1202 | VHiPD485505-2 | J | UPD485505G-25 | AY |
| IC2001 | RH-iX3479CEZZ | J | I.C. | BA |
| IC2002 | VHiPST529DM-1 | J | PST529DMT | AE |
| IC2003 | VHiTC4W66F/-1 | J | TC4W66F | AE |
| IC2004 | VHiBR24C08F-1 | J | BR24C08F-E2 | AF |
| IC2005 | VHiBA7046F/-1 | J | BA7046F | AF |

TRANSISTORS

| | | | | |
|-------|---------------|---|----------|----|
| Q201 | VS2SC2712Y/-1 | J | 2SC2712Y | AB |
| Q202 | VS2SC2712Y/-1 | J | 2SC2712Y | AB |
| Q203 | VSFMY3////-1 | J | FMY3 | AB |
| Q204 | VS2SC2712Y/-1 | J | 2SC2712Y | AB |
| Q302 | VS2SA1162Y/-1 | J | 2SA1162Y | AB |
| Q303 | VSDTC314TK/-1 | J | DTC314TK | AC |
| Q304 | VSDTC314TK/-1 | J | DTC314TK | AC |
| Q305 | VSDTC314TK/-1 | J | DTC314TK | AC |
| Q306 | VSDTC144EE/-1 | J | DTC144EE | AA |
| Q308 | VSDTC144EE/-1 | J | DTC144EE | AA |
| Q701 | VS2SA1162Y/-1 | J | 2SA1162Y | AB |
| Q702 | VS2SK2503/-1 | J | 2SK2503 | AE |
| Q703 | VS2SC2712Y/-1 | J | 2SC2712Y | AB |
| Q707 | VSDTC144EE/-1 | J | DTC144EE | AA |
| Q708 | VSFMMT718/-1 | J | FMMT718 | AE |
| Q709 | VSDTC144EE/-1 | J | DTC144EE | AA |
| Q710 | VS2SA1162Y/-1 | J | 2SA1162Y | AB |
| Q751 | VSFZT1053A/-1 | J | FZT1053A | AG |
| Q752 | VSFZT1053A/-1 | J | FZT1053A | AG |
| Q753 | VS2SA1162Y/-1 | J | 2SA1162Y | AB |
| Q754 | VSDTC114YE/-1 | J | DTC114YE | AB |
| Q757 | VSUPA606T/-1 | J | UPA606T | AD |
| Q1101 | VS2SA1729/-1 | J | 2SA1729 | AF |
| Q1102 | VS2SC4520/-1 | J | 2SC4520 | AE |
| Q1201 | VSDTC144EE/-1 | J | DTC144EE | AA |
| Q2003 | VS2SC2712Y/-1 | J | 2SC2712Y | AB |
| Q2004 | VSDTC144EE/-1 | J | DTC144EE | AA |
| Q2005 | VSDTA144EE/-1 | J | DTC144EE | AA |
| Q2006 | VSDTC144EE/-1 | J | DTC144EE | AA |

DIODES

| | | | | |
|-------|---------------|---|-------------|----|
| D201 | VHDDAN222/-1 | J | Diode | AA |
| D702 | VHDSFPB56//2E | J | Diode | AC |
| D703 | VHD1SS250//1E | J | Diode | AB |
| D704 | VHD1SS250//1E | J | Diode | AB |
| D705 | VHDDAN222/-1 | J | Diode | AA |
| D706 | VHDSFPB74//2E | J | Diode | AD |
| D707 | VHDDAN222/-1 | J | Diode | AA |
| D709 | VHDDAN222/-1 | J | Diode | AA |
| D710 | VHDDAN222/-1 | J | Diode | AA |
| D712 | VHDDAN222/-1 | J | Diode | AA |
| D753 | VHDiMN10///-1 | J | Diode | AB |
| D754 | VHDiMN10///-1 | J | Diode | AB |
| D1101 | VHD1SS250//1E | J | Diode | AB |
| D1201 | VHDDAN222/-1 | J | Diode | AA |
| D1202 | RH-EX0227CEZZ | J | Zener Diode | AB |

PACKAGED CIRCUITS

| | | | | |
|-------|---------------|---|---------|----|
| X801 | RCRSC0012CEZZ | J | Crystal | AH |
| X901 | RCRSB0250GEZZ | J | Crystal | AG |
| X2002 | RFiLA0107CEZZ | J | Filter | AD |

COILS

| | | | | |
|------|---------------|---|---------------|----|
| L701 | RCiLC0130CEZZ | J | Coil | AG |
| L705 | RCiLC0057CEZZ | J | Coil | AD |
| L706 | RCiLC0130CEZZ | J | Coil | AG |
| L751 | RCiLC0107CEZZ | J | Coil | AF |
| L752 | RCiLC0107CEZZ | J | Coil | AF |
| L801 | VP-1M3R3JR93N | J | Peaking 3.3μH | AB |
| L802 | VP-1M3R3JR93N | J | Peaking 3.3μH | AB |
| L803 | VP-1M3R3JR93N | J | Peaking 3.3μH | AB |
| L804 | RCiLC0055CEZZ | J | Coil | AD |
| L805 | RCiLC0055CEZZ | J | Coil | AD |
| L806 | VP-1M4R7J1R2N | J | Peaking 4.7μH | AB |
| L807 | VP-1M4R7J1R2N | J | Peaking 4.7μH | AB |
| L901 | VP-1M4R7J1R2N | J | Peaking 4.7μH | AB |
| L902 | VP-1M101J7R7N | J | Peaking 100μH | AC |

| Ref. No. | Part No. | ★ | Description | Code | Ref. No. | Part No. | ★ | Description | Code |
|--|---------------|---------|-------------------|------|----------|---------------|---------|--------------------|------|
| DUNTKA077FE08 MAIN UNIT (Continued) | | | | | | | | | |
| L1202 | VP-1M470J5R4N | J | Peaking 47μH | AC | C734 | VCKYTV1CF105Z | J 1.0 | 16V Ceramic | AB |
| L1203 | VP-1M220J2R9N | J | Peaking 22μH | AC | C735 | RC-EZ0416CEZZ | J 330 | 6.3V Electrolytic | AD |
| L1204 | VP-1M220J2R9N | J | Peaking 22μH | AC | C736 | RC-EZ0416CEZZ | J 330 | 6.3V Electrolytic | AD |
| L1205 | VP-1M220J2R9N | J | Peaking 22μH | AC | C737 | RC-EZ1339CEZZ | J 220 | 16V Electrolytic | AD |
| TRANSFORMERS | | | | | C738 | RC-KZ1025CEZZ | J 1.0 | 10V Ceramic | AB |
| △ T701 | RTRNZ0778CEZZ | J | Transformer | AM | C740 | VCEAPF1EN475M | J 4.7 | 25V Electrolytic | AC |
| △ T751 | RTRNZ0777CEZZ | J | Transformer | AM | C741 | VCKYTV1CF105Z | J 1.0 | 16V Ceramic | AB |
| △ T752 | RTRNZ0777CEZZ | J | Transformer | AM | C746 | VCKYCY1EF104Z | J 0.1 | 25V Ceramic | AA |
| CAPACITORS | | | | | C747 | VCKYTV1HB562K | J 5600p | 50V Ceramic | AA |
| C201 | VCKYTV1HF104Z | J 0.1 | 50V Ceramic | AA | C748 | RC-EZ1339CEZZ | J 220 | 16V Electrolytic | AD |
| C202 | VCKYCY1EF104Z | J 0.1 | 25V Ceramic | AA | C749 | RC-EZ1177CEZZ | J 150 | 6.3V Electrolytic | AH |
| C203 | RC-KZ1025CEZZ | J 1.0 | 10V Ceramic | AB | C751 | VCEA4U1CN228M | J 2200 | 16V Electrolytic | AE |
| C204 | RC-KZ1025CEZZ | J 1.0 | 10V Ceramic | AB | C752 | RC-FZ0174CEZZ | J 0.12 | 100V Polyprop Film | AG |
| C205 | VCKYCY1EF104Z | J 0.1 | 25V Ceramic | AA | C757 | VCKYCY1CB823K | J 0.082 | 16V Ceramic | AH |
| C206 | VCKYCY1HF103Z | J 0.01 | 50V Ceramic | AA | C759 | VCEAPF0JN107M | J 100 | 6.3V Electrolytic | AD |
| C301 | VCEAPF1CN106M | J 10 | 16V Electrolytic | AD | C762 | RC-FZ0174CEZZ | J 0.12 | 100V Polyprop Film | AG |
| C302 | VCEAPF1CN107M | J 100 | 16V Electrolytic | AD | C764 | VCKYTV1CF105Z | J 1.0 | 16V Ceramic | AB |
| C303 | VCKYCY1EF104Z | J 0.1 | 25V Ceramic | AA | C765 | VCKYTV1CF105Z | J 1.0 | 16V Ceramic | AB |
| C304 | VCEAPF1CN476M | J 47 | 16V Electrolytic | AD | C801 | VCEAPF1CN106M | J 10 | 16V Electrolytic | AD |
| C305 | VCKYCY1HB102K | J 1000p | 50V Ceramic | AA | C802 | VCKYCY1EF104Z | J 0.1 | 25V Ceramic | AA |
| C306 | VCEAPW1CN477M | J 470 | 16V Electrolytic | AE | C803 | VCCCY1HH7R0D | J 7.0p | 50V Ceramic | AA |
| C307 | VCEAPF1HN225M | J 2.2 | 50V Electrolytic | AD | C804 | VCCCY1HH7R0D | J 7.0p | 50V Ceramic | AA |
| C308 | VCEAPF1HN225M | J 2.2 | 50V Electrolytic | AD | C805 | RC-KZ1025CEZZ | J 1.0 | 10V Ceramic | AB |
| C309 | VCKYCY1HB102K | J 1000p | 50V Ceramic | AA | C806 | RC-KZ1025CEZZ | J 1.0 | 10V Ceramic | AB |
| C310 | VCEAPF1CN476M | J 47 | 16V Electrolytic | AD | C807 | VCKYCY1HB331K | J 330p | 50V Ceramic | AA |
| C311 | VCKYCY1EF104Z | J 0.1 | 25V Ceramic | AA | C808 | VCKYCY1HB331K | J 330p | 50V Ceramic | AA |
| C312 | VCEAPF1CN107M | J 100 | 16V Electrolytic | AD | C809 | VCEAPK1CN107M | J 100 | 16V Electrolytic | AD |
| C313 | VCKYTV1CF105Z | J 1.0 | 16V Ceramic | AB | C810 | VCKYCY1EF104Z | J 0.1 | 25V Ceramic | AA |
| C314 | VCEA4U1CN228M | J 2200 | 16V Electrolytic | AE | C811 | VCKYCY1HB331K | J 330p | 50V Ceramic | AA |
| C316 | VCKYCY1EF104Z | J 0.1 | 25V Ceramic | AA | C812 | RC-KZ1025CEZZ | J 1.0 | 10V Ceramic | AB |
| C317 | VCEAPF1HN105M | J 1.0 | 50V Electrolytic | AD | C813 | RC-KZ1025CEZZ | J 1.0 | 10V Ceramic | AB |
| C318 | VCEAPF1HN105M | J 1.0 | 50V Electrolytic | AD | C814 | VCKYCY1HB102K | J 1000p | 50V Ceramic | AA |
| C319 | VCEAPF0JN226M | J 22 | 6.3V Electrolytic | AD | C815 | VCKYTV1CF684Z | J 0.68 | 16V Ceramic | AB |
| C320 | VCEAPF0JN226M | J 22 | 6.3V Electrolytic | AD | C816 | VCKYTV1CF684Z | J 0.68 | 16V Ceramic | AB |
| C321 | VCEAPF1CN106M | J 10 | 16V Electrolytic | AD | C817 | VCKYTV1CF684Z | J 0.68 | 16V Ceramic | AB |
| C322 | VCEAPF1CN107M | J 100 | 16V Electrolytic | AD | C818 | RC-KZ1025CEZZ | J 1.0 | 10V Ceramic | AB |
| C323 | VCKYCY1EF104Z | J 0.1 | 25V Ceramic | AA | C819 | RC-KZ1025CEZZ | J 1.0 | 10V Ceramic | AB |
| C324 | VCEAPF1CN107M | J 100 | 16V Electrolytic | AD | C820 | VCKYCY1EF104Z | J 0.1 | 25V Ceramic | AA |
| C325 | VCKYCY1CB273K | J 0.027 | 16V Ceramic | AA | C821 | VCEAPW1CN477M | J 470 | 16V Electrolytic | AE |
| C326 | VCEAPW1CN477M | J 470 | 16V Electrolytic | AE | C822 | RC-KZ1025CEZZ | J 1.0 | 10V Ceramic | AB |
| C327 | VCEAPF1HN105M | J 1.0 | 50V Electrolytic | AD | C825 | RC-KZ1025CEZZ | J 1.0 | 10V Ceramic | AB |
| C328 | RC-EZ1274CEZZ | J 1000 | 16V Electrolytic | AD | C826 | VCKYCY1CF224Z | J 0.22 | 16V Ceramic | AA |
| C329 | VCKYTV1CF105Z | J 1.0 | 16V Ceramic | AB | C827 | VCKYCY1CF224Z | J 0.22 | 16V Ceramic | AA |
| C330 | VCEAPF1HN225M | J 2.2 | 50V Electrolytic | AD | C830 | VCEAPF0GW107M | J 100 | 4.0V Electrolytic | AC |
| C403 | VCKYTV1AB105K | J 1.0 | 10V Ceramic | AD | C831 | VCKYCY1EF104Z | J 0.1 | 25V Ceramic | AA |
| C404 | VCKYTV1AB105K | J 1.0 | 10V Ceramic | AD | C836 | VCE9PF1CN475M | J 4.7 | 16V Elect. (N.P) | AD |
| C406 | VCKYCY1EF104Z | J 0.1 | 25V Ceramic | AA | C839 | VCKYCY1CF224Z | J 0.22 | 16V Ceramic | AA |
| C408 | VCCCY1HH331J | J 330p | 50V Ceramic | AA | C840 | VCKYCY1CF224Z | J 0.22 | 16V Ceramic | AA |
| C409 | VCCCY1HH331J | J 330p | 50V Ceramic | AA | C841 | VCKYCY1CF224Z | J 0.22 | 16V Ceramic | AA |
| C411 | VCCCY1HH331J | J 330p | 50V Ceramic | AA | C842 | VCEAPF0GW107M | J 100 | 4.0V Electrolytic | AC |
| C701 | VCCCY1HH471J | J 470p | 50V Ceramic | AA | C844 | VCKYCY1EF104Z | J 0.1 | 25V Ceramic | AA |
| C702 | VCKYTV1CF105Z | J 1.0 | 16V Ceramic | AB | C848 | VCEAPF0JW107M | J 100 | 6.3V Electrolytic | AC |
| C703 | VCEAPF1CN226M | J 22 | 16V Electrolytic | AD | C874 | RC-KZ1025CEZZ | J 1.0 | 10V Ceramic | AB |
| C704 | VCKYTV1CF105Z | J 1.0 | 16V Ceramic | AB | C875 | RC-KZ1025CEZZ | J 1.0 | 10V Ceramic | AB |
| C706 | VCKYCY1HB562K | J 5600p | 50V Ceramic | AA | C876 | VCEAPF0GW107M | J 100 | 4.0V Electrolytic | AC |
| C707 | VCKYCY1CF334Z | J 0.33 | 16V Ceramic | AA | C878 | RC-KZ1025CEZZ | J 1.0 | 10V Ceramic | AB |
| C708 | VCEAPF0JN226M | J 22 | 6.3V Electrolytic | AD | C879 | VCKYTV1CF684Z | J 0.68 | 16V Ceramic | AB |
| C710 | VCKYTV1CF105Z | J 1.0 | 16V Ceramic | AB | C902 | VCKYCY1EF104Z | J 0.1 | 25V Ceramic | AA |
| C711 | VCKYCY1EB103K | J 0.01 | 25V Ceramic | AA | C905 | VCEAPF1CW106M | J 10 | 16V Electrolytic | AB |
| C712 | VCEAPT1CN226M | J 22 | 16V Electrolytic | AC | C906 | VCEAPF1CW106M | J 10 | 16V Electrolytic | AB |
| C713 | RC-EZ1176CEZZ | J 100 | 16V Electrolytic | AK | C909 | VCKYCY1HB682K | J 6800p | 50V Ceramic | AA |
| C716 | VCKYTV1CF105Z | J 1.0 | 16V Ceramic | AB | C910 | VCKYCY1HB682K | J 6800p | 50V Ceramic | AA |
| C719 | RC-EZ0420CEZZ | J 100 | 25V Electrolytic | AE | C911 | VCEAPF1CW106M | J 10 | 16V Electrolytic | AB |
| C721 | VCEASD1HN336M | J 33 | 50V Electrolytic | AD | C912 | VCEAPF1CW106M | J 10 | 16V Electrolytic | AB |
| C722 | VCKYTV1HF104Z | J 0.1 | 50V Ceramic | AA | C913 | VCKYCY1EF104Z | J 0.1 | 25V Ceramic | AA |
| C728 | VCKYTV1HF104Z | J 0.1 | 50V Ceramic | AA | C914 | RC-EZ0417CEZZ | J 150 | 16V Electrolytic | AD |
| C729 | VCKYTV1CF105Z | J 1.0 | 16V Ceramic | AB | C915 | VCEAPF0JW336M | J 33 | 6.3V Electrolytic | AB |
| C731 | VCCCY1HH181J | J 180p | 50V Ceramic | AA | C916 | VCKYCY1EF104Z | J 0.1 | 25V Ceramic | AA |
| C733 | RC-EZ0538CEZZ | J 330 | 16V Electrolytic | AE | C919 | RC-KZ1025CEZZ | J 1.0 | 10V Ceramic | AB |
| | | | | | C920 | RC-KZ1025CEZZ | J 1.0 | 10V Ceramic | AB |
| | | | | | C921 | RC-KZ1025CEZZ | J 1.0 | 10V Ceramic | AB |
| | | | | | C922 | RC-KZ1025CEZZ | J 1.0 | 10V Ceramic | AB |
| | | | | | C923 | VCKYCY1EF104Z | J 0.1 | 25V Ceramic | AA |
| | | | | | C924 | VCEAPF1CW106M | J 10 | 16V Electrolytic | AB |
| | | | | | C925 | RC-KZ1025CEZZ | J 1.0 | 10V Ceramic | AB |

| Ref. No. | Part No. | ★ | Description | Code | Ref. No. | Part No. | ★ | Description | Code |
|------------------------------|---------------|---|-----------------------|------|------------------|---------------|---|------------------------|------|
| DUNTKA077FE08 | | | | | | | | | |
| MAIN UNIT (Continued) | | | | | | | | | |
| C927 | VCCCCY1HH560J | J | 56p 50V Ceramic | AA | C2010 | VCKYCY1EF104Z | J | 0.1 25V Ceramic | AA |
| C928 | VCCCCY1HH560J | J | 56p 50V Ceramic | AA | C2016 | VCKYCY1EF104Z | J | 0.1 25V Ceramic | AA |
| C929 | VCCCCY1HH560J | J | 56p 50V Ceramic | AA | C2017 | VCKYCY1EF104Z | J | 0.1 25V Ceramic | AA |
| C930 | VCCCCY1HH5R0C | J | 5.0p 50V Ceramic | AA | C2018 | VCCCCY1HH101J | J | 100p 50V Ceramic | AA |
| C931 | VCCCCY1HH5R0C | J | 5.0p 50V Ceramic | AA | C2019 | VCKYTV1AB105K | J | 1.0 10V Ceramic | AD |
| C932 | VCKYCY1EF104Z | J | 0.1 25V Ceramic | AA | C2020 | VCKYCY1HB102K | J | 1000p 50V Ceramic | AA |
| C933 | RC-EZ0417CEZZ | J | 150 16V Electrolytic | AD | C2021 | VCEAPF1AW476M | J | 47 10V Electrolytic | AB |
| C935 | VCEAPF1CW226M | J | 22 16V Electrolytic | AB | C2022 | VCKYCY1EF104Z | J | 0.1 25V Ceramic | AA |
| C937 | RC-EZ0417CEZZ | J | 150 16V Electrolytic | AD | C2023 | VCKYTV1AB105K | J | 1.0 10V Ceramic | AD |
| C938 | RC-EZ0417CEZZ | J | 150 16V Electrolytic | AD | C2024 | VCKYCY1HB222K | J | 2200p 50V Ceramic | AA |
| C939 | VCKYCY1HB561K | J | 560p 50V Ceramic | AA | RESISTORS | | | | |
| C940 | VCKYCY1HB152K | J | 1500p 50V Ceramic | AA | R201 | VRS-CY1JF102J | J | 1.0k 1/16W Metal Oxide | AA |
| C941 | VCKYCY1HB152K | J | 1500p 50V Ceramic | AA | R202 | VRS-CY1JF103F | J | 10k 1/16W Metal Oxide | AA |
| C942 | VCKYCY1HB561K | J | 560p 50V Ceramic | AA | R203 | VRS-CY1JF102F | J | 1.0k 1/16W Metal Oxide | AA |
| C943 | VCKYCY1EF104Z | J | 0.1 25V Ceramic | AA | R204 | VRS-CY1JF473F | J | 47k 1/16W Metal Oxide | AA |
| C944 | VCEAPF1CW106M | J | 10 16V Electrolytic | AB | R205 | VRS-CY1JF103J | J | 10k 1/16W Metal Oxide | AA |
| C945 | VCEAPF1HW225M | J | 2.2 50V Electrolytic | AB | R206 | VRS-CY1JF103F | J | 10k 1/16W Metal Oxide | AA |
| C946 | VCEAPF1HW225M | J | 2.2 50V Electrolytic | AB | R207 | VRS-CY1JF622F | J | 6.2k 1/16W Metal Oxide | AA |
| C954 | VCEAPF1CW106M | J | 10 16V Electrolytic | AB | R208 | VRS-CY1JF473F | J | 47k 1/16W Metal Oxide | AA |
| C955 | VCKYTV1CF105Z | J | 1.0 16V Ceramic | AB | R209 | VRS-CY1JF123F | J | 12k 1/16W Metal Oxide | AA |
| C956 | VCKYTV1CF105Z | J | 1.0 16V Ceramic | AB | R210 | VRS-CY1JF272F | J | 2.7k 1/16W Metal Oxide | AA |
| C957 | VCEAPF1EW475M | J | 4.7 25V Electrolytic | AB | R211 | VRS-CY1JF302F | J | 3.0k 1/16W Metal Oxide | AA |
| C958 | VCEAPF1EW475M | J | 4.7 25V Electrolytic | AB | R212 | VRS-CY1JF332F | J | 3.3k 1/16W Metal Oxide | AA |
| C961 | VCKYCY1HB102K | J | 1000p 50V Ceramic | AA | R213 | VRS-CY1JF682F | J | 6.8k 1/16W Metal Oxide | AA |
| C962 | VCKYCY1HB102K | J | 1000p 50V Ceramic | AA | R214 | VRS-CY1JF122F | J | 1.2k 1/16W Metal Oxide | AA |
| C963 | VCKYCY1HB102K | J | 1000p 50V Ceramic | AA | R215 | VRS-CY1JF102J | J | 1.0k 1/16W Metal Oxide | AA |
| C964 | VCKYCY1HB102K | J | 1000p 50V Ceramic | AA | R216 | VRS-CY1JF153J | J | 15k 1/16W Metal Oxide | AA |
| C1101 | VCKYCY1EF104Z | J | 0.1 25V Ceramic | AA | R217 | VRS-CY1JF102J | J | 1.0k 1/16W Metal Oxide | AA |
| C1102 | VCKYCY1EF104Z | J | 0.1 25V Ceramic | AA | R218 | VRS-CY1JF391J | J | 390 1/16W Metal Oxide | AA |
| C1103 | VCKYCY1EF104Z | J | 0.1 25V Ceramic | AA | R219 | VRS-TV1JD103J | J | 10k 1/16W Metal Oxide | AA |
| C1104 | VCKYCY1EF104Z | J | 0.1 25V Ceramic | AA | R220 | VRS-CY1JF102J | J | 1.0k 1/16W Metal Oxide | AA |
| C1105 | VCKYCY1EF104Z | J | 0.1 25V Ceramic | AA | R301 | VRS-CY1JF000J | J | 0 1/16W Metal Oxide | AA |
| C1106 | VCKYCY1EF104Z | J | 0.1 25V Ceramic | AA | R302 | VRS-TX2HF8R2J | J | 8.2 1/2W Metal Oxide | AA |
| C1107 | VCKYCY1EF104Z | J | 0.1 25V Ceramic | AA | R303 | VRS-CY1JF331J | J | 330 1/16W Metal Oxide | AA |
| C1108 | VCKYCY1EF104Z | J | 0.1 25V Ceramic | AA | R304 | VRS-CY1JF331J | J | 330 1/16W Metal Oxide | AA |
| C1109 | VCKYCY1EF104Z | J | 0.1 25V Ceramic | AA | R305 | VRS-TX2HF8R2J | J | 8.2 1/2W Metal Oxide | AA |
| C1110 | VCKYCY1EF104Z | J | 0.1 25V Ceramic | AA | R308 | VRS-CY1JF223J | J | 22k 1/16W Metal Oxide | AA |
| C1111 | VCKYCY1EF104Z | J | 0.1 25V Ceramic | AA | R309 | VRS-TW2ED222J | J | 2.2k 1/4W Metal Oxide | AA |
| C1112 | VCKYCY1EF104Z | J | 0.1 25V Ceramic | AA | R310 | VRS-CY1JF223J | J | 22k 1/16W Metal Oxide | AA |
| C1113 | VCKYCY1EF104Z | J | 0.1 25V Ceramic | AA | R311 | VRS-CY1JF223J | J | 22k 1/16W Metal Oxide | AA |
| C1114 | VCKYCY1EF104Z | J | 0.1 25V Ceramic | AA | R314 | VRS-CY1JF512J | J | 5.1k 1/16W Metal Oxide | AA |
| C1115 | VCKYCY1EF104Z | J | 0.1 25V Ceramic | AA | R315 | VRS-CY1JF242J | J | 2.4k 1/16W Metal Oxide | AA |
| C1116 | VCKYCY1EF104Z | J | 0.1 25V Ceramic | AA | R316 | VRS-CY1JF512J | J | 5.1k 1/16W Metal Oxide | AA |
| C1117 | VCCCCY1HH560J | J | 56p 50V Ceramic | AA | R317 | VRS-CY1JF242J | J | 2.4k 1/16W Metal Oxide | AA |
| C1118 | VCKYCY1EF104Z | J | 0.1 25V Ceramic | AA | R318 | VRS-CY1JF000J | J | 0 1/16W Metal Oxide | AA |
| C1119 | VCKYTV1CF105Z | J | 1.0 16V Ceramic | AB | R319 | VRS-TX2HF8R2J | J | 8.2 1/2W Metal Oxide | AA |
| C1120 | VCKYTV1EF104Z | J | 0.1 25V Ceramic | AB | R320 | VRS-CY1JF150J | J | 15 1/16W Metal Oxide | AA |
| C1122 | VCKYTV1CF105Z | J | 1.0 16V Ceramic | AB | R321 | VRS-CY1JF242J | J | 2.4k 1/16W Metal Oxide | AA |
| C1123 | VCKYCY1EF104Z | J | 0.1 25V Ceramic | AA | R322 | VRS-CY1JF472J | J | 4.7k 1/16W Metal Oxide | AA |
| C1124 | VCKYCY1EF104Z | J | 0.1 25V Ceramic | AA | R323 | VRS-CY1JF472J | J | 4.7k 1/16W Metal Oxide | AA |
| C1202 | VCKYCY1EF104Z | J | 0.1 25V Ceramic | AA | R324 | VRS-CY1JF472J | J | 4.7k 1/16W Metal Oxide | AA |
| C1203 | VCKYCY1EF104Z | J | 0.1 25V Ceramic | AA | R327 | VRS-CY1JF000J | J | 0 1/16W Metal Oxide | AA |
| C1204 | VCCCCY1HH220J | J | 22p 50V Ceramic | AA | R328 | VRS-CY1JF104J | J | 100k 1/16W Metal Oxide | AA |
| C1205 | VCCCCY1HH220J | J | 22p 50V Ceramic | AA | R329 | VRS-CY1JF104J | J | 100k 1/16W Metal Oxide | AA |
| C1206 | VCEAPF1HN106M | J | 10 50V Electrolytic | AD | R330 | VRS-CY1JF104J | J | 100k 1/16W Metal Oxide | AA |
| C1207 | VCKYCY1EF104Z | J | 0.1 25V Ceramic | AA | R401 | VRS-CY1JF101J | J | 100 1/16W Metal Oxide | AA |
| C1209 | VCEAPF0JW107M | J | 100 6.3V Electrolytic | AC | R402 | VRS-CY1JF000J | J | 0 1/16W Metal Oxide | AA |
| C1210 | VCEAPF0GW107M | J | 100 4.0V Electrolytic | AC | R403 | VRS-CY1JF682J | J | 6.8k 1/16W Metal Oxide | AA |
| C1211 | VCKYCY1EF104Z | J | 0.1 25V Ceramic | AA | R404 | VRS-CY1JF682J | J | 6.8k 1/16W Metal Oxide | AA |
| C1212 | VCKYCY1EF104Z | J | 0.1 25V Ceramic | AA | R405 | VRS-CY1JF101J | J | 100 1/16W Metal Oxide | AA |
| C1213 | VCEAPF0JW107M | J | 100 6.3V Electrolytic | AC | R406 | VRS-CY1JF101J | J | 100 1/16W Metal Oxide | AA |
| C1214 | VCEAPF0GW107M | J | 100 4.0V Electrolytic | AC | R407 | VRS-CY1JF103J | J | 10k 1/16W Metal Oxide | AA |
| C1215 | RC-KZ1025CEZZ | J | 1.0 10V Ceramic | AB | R408 | VRS-CY1JF103J | J | 10k 1/16W Metal Oxide | AA |
| C1217 | VCEAPF1CW226M | J | 22 16V Electrolytic | AB | R409 | VRS-CY1JF101J | J | 100 1/16W Metal Oxide | AA |
| C1218 | VCEAPF1CN106M | J | 10 16V Electrolytic | AD | R410 | VRS-CY1JF101J | J | 100 1/16W Metal Oxide | AA |
| C2001 | VCKYCY1HB102K | J | 1000p 50V Ceramic | AA | R411 | VRS-CY1JF101J | J | 100 1/16W Metal Oxide | AA |
| C2002 | VCCCCY1HH221J | J | 220p 50V Ceramic | AA | R412 | VRS-CY1JF101J | J | 100 1/16W Metal Oxide | AA |
| C2003 | VCEAPF1HW105M | J | 1.0 50V Electrolytic | AB | R413 | VRS-CY1JF101J | J | 100 1/16W Metal Oxide | AA |
| C2006 | VCKYCY1EF104Z | J | 0.1 25V Ceramic | AA | R414 | VRS-CY1JF101J | J | 100 1/16W Metal Oxide | AA |
| C2007 | VCKYCY1EF104Z | J | 0.1 25V Ceramic | AA | R418 | VRS-CY1JF101J | J | 100 1/16W Metal Oxide | AA |
| C2009 | VCKYCY1EF104Z | J | 0.1 25V Ceramic | AA | R419 | VRS-CY1JF000J | J | 0 1/16W Metal Oxide | AA |
| | | | | | R420 | VRS-CY1JF101J | J | 100 1/16W Metal Oxide | AA |
| | | | | | R424 | VRS-CY1JF101J | J | 100 1/16W Metal Oxide | AA |
| | | | | | R430 | VRS-CA1JF562J | J | 5.6k 1/16W Metal Oxide | AA |

| Ref. No. | Part No. | ★ | Description | Code | Ref. No. | Part No. | ★ | Description | Code |
|------------------------------|---------------|---|-------------|----------------|----------|---------------|---|-------------|----------------|
| DUNTKA077FE08 | | | | | | | | | |
| MAIN UNIT (Continued) | | | | | | | | | |
| R434 | VRS-CY1JF105J | J | 1.0M 1/16W | Metal Oxide AA | R832 | VRS-CY1JF102J | J | 1.0k 1/16W | Metal Oxide AA |
| R435 | VRS-CY1JF105J | J | 1.0M 1/16W | Metal Oxide AA | R833 | VRS-CY1JF102J | J | 1.0k 1/16W | Metal Oxide AA |
| R436 | VRS-CY1JF105J | J | 1.0M 1/16W | Metal Oxide AA | R834 | VRS-CY1JF102J | J | 1.0k 1/16W | Metal Oxide AA |
| R437 | VRS-CY1JF000J | J | 0 1/16W | Metal Oxide AA | R852 | VRS-CY1JF000J | J | 0 1/16W | Metal Oxide AA |
| R701 | VRS-CY1JF1R0J | J | 1.0 1/16W | Metal Oxide AA | R860 | VRS-CY1JF000J | J | 0 1/16W | Metal Oxide AA |
| R702 | VRS-CY1JF154J | J | 150k 1/16W | Metal Oxide AA | R861 | VRS-CY1JF000J | J | 0 1/16W | Metal Oxide AA |
| R703 | VRS-CY1JF274J | J | 270k 1/16W | Metal Oxide AA | R901 | VRS-CY1JF101J | J | 100 1/16W | Metal Oxide AA |
| R704 | VRS-TQ2BD000J | J | 0 1/8W | Metal Oxide AA | R902 | VRS-CY1JF101J | J | 100 1/16W | Metal Oxide AA |
| R705 | VRS-TX2HF000J | J | 0 1/2W | Metal Oxide AA | R903 | VRS-CY1JF101J | J | 100 1/16W | Metal Oxide AA |
| R706 | VRS-CR3AD821J | J | 820 1W | Metal Oxide AC | R905 | VRS-CY1JF000J | J | 0 1/16W | Metal Oxide AA |
| R707 | VRS-CY1JF000J | J | 0 1/16W | Metal Oxide AA | R908 | VRS-CY1JF000J | J | 0 1/16W | Metal Oxide AA |
| R708 | VRS-CY1JF272F | J | 2.7k 1/16W | Metal Oxide AA | R909 | VRS-CY1JF102J | J | 1.0k 1/16W | Metal Oxide AA |
| R709 | VRS-CY1JF123F | J | 12k 1/16W | Metal Oxide AA | R910 | VRS-CY1JF102J | J | 1.0k 1/16W | Metal Oxide AA |
| R711 | VRS-CY1JF184J | J | 180k 1/16W | Metal Oxide AA | R913 | VRS-CY1JF000J | J | 0 1/16W | Metal Oxide AA |
| R712 | VRS-CY1JF683F | J | 68k 1/16W | Metal Oxide AA | R914 | VRS-CY1JF000J | J | 0 1/16W | Metal Oxide AA |
| R713 | VRS-CY1JF133F | J | 13k 1/16W | Metal Oxide AA | R915 | VRS-CY1JF000J | J | 0 1/16W | Metal Oxide AA |
| R715 | VRS-CY1JF000J | J | 0 1/16W | Metal Oxide AA | R916 | VRS-CY1JF000J | J | 0 1/16W | Metal Oxide AA |
| R716 | VRS-TX2HF000J | J | 0 1/2W | Metal Oxide AA | R917 | VRS-CY1JF105J | J | 1.0M 1/16W | Metal Oxide AA |
| R717 | VRS-CY1JF152F | J | 1.5k 1/16W | Metal Oxide AA | R918 | VRS-CY1JF822F | J | 8.2k 1/16W | Metal Oxide AA |
| R718 | VRS-CY1JF274J | J | 270k 1/16W | Metal Oxide AA | R919 | VRS-CY1JF822F | J | 8.2k 1/16W | Metal Oxide AA |
| R719 | VRS-CY1JF563F | J | 56k 1/16W | Metal Oxide AA | R920 | VRS-CY1JF822F | J | 8.2k 1/16W | Metal Oxide AA |
| R720 | VRS-CY1JF473J | J | 47k 1/16W | Metal Oxide AA | R921 | VRS-CY1JF822F | J | 8.2k 1/16W | Metal Oxide AA |
| R721 | VRS-CY1JF103J | J | 10k 1/16W | Metal Oxide AA | R922 | VRS-CY1JF223J | J | 22k 1/16W | Metal Oxide AA |
| R722 | VRS-CY1JF105J | J | 1.0M 1/16W | Metal Oxide AA | R923 | VRS-CY1JF223J | J | 22k 1/16W | Metal Oxide AA |
| R723 | VRS-CY1JF682J | J | 6.8k 1/16W | Metal Oxide AA | R924 | VRS-CY1JF473J | J | 47k 1/16W | Metal Oxide AA |
| R724 | VRS-TQ2BD000J | J | 0 1/8W | Metal Oxide AA | R925 | VRS-CY1JF473J | J | 47k 1/16W | Metal Oxide AA |
| R725 | VRS-CY1JF1R0J | J | 1.0 1/16W | Metal Oxide AA | R951 | VRS-CY1JF000J | J | 0 1/16W | Metal Oxide AA |
| R726 | VRS-CY1JF1R0J | J | 1.0 1/16W | Metal Oxide AA | R954 | VRS-CY1JF000J | J | 0 1/16W | Metal Oxide AA |
| R729 | VRS-TQ2BD000J | J | 0 1/8W | Metal Oxide AA | R958 | VRS-CY1JF103J | J | 10k 1/16W | Metal Oxide AA |
| R731 | VRS-TQ2BD000J | J | 0 1/8W | Metal Oxide AA | R959 | VRS-CY1JF103J | J | 10k 1/16W | Metal Oxide AA |
| R732 | VRS-TW2ED222J | J | 2.2k 1/4W | Metal Oxide AA | R960 | VRS-CY1JF103J | J | 10k 1/16W | Metal Oxide AA |
| R733 | VRS-TQ2BD683J | J | 68k 1/8W | Metal Oxide AA | R961 | VRS-CY1JF103J | J | 10k 1/16W | Metal Oxide AA |
| R734 | VRS-CY1JF393J | J | 39k 1/16W | Metal Oxide AA | R962 | VRS-CY1JF153J | J | 15k 1/16W | Metal Oxide AA |
| R735 | VRS-CY1JF223J | J | 22k 1/16W | Metal Oxide AA | R963 | VRS-CY1JF223J | J | 22k 1/16W | Metal Oxide AA |
| R736 | VRS-CY1JF1R0J | J | 1.0 1/16W | Metal Oxide AA | R964 | VRS-CY1JF473J | J | 47k 1/16W | Metal Oxide AA |
| R737 | VRS-CY1JF472J | J | 4.7k 1/16W | Metal Oxide AA | R965 | VRS-CY1JF473J | J | 47k 1/16W | Metal Oxide AA |
| R738 | VRS-TW2ED102J | J | 1.0k 1/4W | Metal Oxide AA | R966 | VRS-CY1JF912J | J | 9.1k 1/16W | Metal Oxide AA |
| R739 | VRS-CY1JF102J | J | 1.0k 1/16W | Metal Oxide AA | R967 | VRS-CY1JF912J | J | 9.1k 1/16W | Metal Oxide AA |
| R740 | VRS-CY1JF102J | J | 1.0k 1/16W | Metal Oxide AA | R968 | VRS-CY1JF682J | J | 6.8k 1/16W | Metal Oxide AA |
| R741 | VRS-CY1JF000J | J | 0 1/16W | Metal Oxide AA | R969 | VRS-CY1JF682J | J | 6.8k 1/16W | Metal Oxide AA |
| R742 | VRS-CY1JF000J | J | 0 1/16W | Metal Oxide AA | R1101 | VRS-CA1JF333J | J | 33k 1/16W | Metal Oxide AA |
| R747 | VRS-CY1JF000J | J | 0 1/16W | Metal Oxide AA | R1102 | VRS-CA1JF103J | J | 10k 1/16W | Metal Oxide AA |
| R748 | VRS-CY1JF000J | J | 0 1/16W | Metal Oxide AA | R1103 | VRS-CA1JF103J | J | 10k 1/16W | Metal Oxide AA |
| R751 | VRS-TW2ED332J | J | 3.3k 1/4W | Metal Oxide AB | R1104 | VRS-CA1JF333J | J | 33k 1/16W | Metal Oxide AA |
| R752 | VRS-TW2ED332J | J | 3.3k 1/4W | Metal Oxide AB | R1105 | VRS-CY1JF104J | J | 100k 1/16W | Metal Oxide AA |
| R753 | VRS-CY1JF333J | J | 33k 1/16W | Metal Oxide AA | R1106 | VRS-CA1JF333J | J | 33k 1/16W | Metal Oxide AA |
| R754 | VRS-CY1JF103J | J | 10k 1/16W | Metal Oxide AA | R1107 | VRS-CA1JF103J | J | 10k 1/16W | Metal Oxide AA |
| R765 | VRS-CY1JF103J | J | 10k 1/16W | Metal Oxide AA | R1108 | VRS-CA1JF103J | J | 10k 1/16W | Metal Oxide AA |
| R766 | VRS-CA1JF821J | J | 820 1/16W | Metal Oxide AA | R1109 | VRS-CA1JF333J | J | 33k 1/16W | Metal Oxide AA |
| R768 | VRS-CA1JF104J | J | 100k 1/16W | Metal Oxide AA | R1110 | VRS-CY1JF104J | J | 100k 1/16W | Metal Oxide AA |
| R770 | VRS-CA1JF562J | J | 5.6k 1/16W | Metal Oxide AA | R1111 | VRS-CY1JF104J | J | 100k 1/16W | Metal Oxide AA |
| R772 | VRS-CY1JF563J | J | 56k 1/16W | Metal Oxide AA | R1112 | VRS-CY1JF103F | J | 10k 1/16W | Metal Oxide AA |
| R774 | VRS-CY1JF000J | J | 0 1/16W | Metal Oxide AA | R1113 | VRS-CA1JF333J | J | 33k 1/16W | Metal Oxide AA |
| R801 | VRS-CB1JF221J | J | 220 1/16W | Metal Oxide AC | R1114 | VRS-CY1JF103F | J | 10k 1/16W | Metal Oxide AA |
| R802 | VRS-CB1JF220J | J | 22 1/16W | Metal Oxide AC | R1115 | VRS-CY1JF102J | J | 1.0k 1/16W | Metal Oxide AA |
| R803 | VRS-CB1JF220J | J | 22 1/16W | Metal Oxide AC | R1116 | VRS-CY1JF102J | J | 1.0k 1/16W | Metal Oxide AA |
| R804 | VRS-CA1JF101J | J | 100 1/16W | Metal Oxide AA | R1117 | VRS-CY1JF102J | J | 1.0k 1/16W | Metal Oxide AA |
| R806 | VRS-CY1JF221J | J | 220 1/16W | Metal Oxide AA | R1118 | VRS-CY1JF823F | J | 82k 1/16W | Metal Oxide AA |
| R807 | VRS-CY1JF750J | J | 75 1/16W | Metal Oxide AA | R1119 | VRS-CY1JF472F | J | 4.7k 1/16W | Metal Oxide AA |
| R808 | VRS-CY1JF750J | J | 75 1/16W | Metal Oxide AA | R1120 | VRS-TW2ED5R6J | J | 5.6 1/4W | Metal Oxide AA |
| R809 | VRS-CY1JF750J | J | 75 1/16W | Metal Oxide AA | R1121 | VRS-CY1JF330J | J | 33 1/16W | Metal Oxide AA |
| R810 | VRS-CB1JF220J | J | 22 1/16W | Metal Oxide AC | R1123 | VRS-CY1JF330J | J | 33 1/16W | Metal Oxide AA |
| R811 | VRS-CY1JF222J | J | 2.2k 1/16W | Metal Oxide AA | R1124 | VRS-CY1JF472F | J | 4.7k 1/16W | Metal Oxide AA |
| R812 | VRS-CY1JF000J | J | 0 1/16W | Metal Oxide AA | R1125 | VRS-TW2ED101J | J | 100 1/4W | Metal Oxide AA |
| R813 | VRS-CB1JF220J | J | 22 1/16W | Metal Oxide AC | R1127 | VRS-TX2HF000J | J | 0 1/2W | Metal Oxide AA |
| R814 | VRS-CY1JF332J | J | 3.3k 1/16W | Metal Oxide AA | R1129 | VRS-CY1JF563F | J | 56k 1/16W | Metal Oxide AA |
| R815 | VRS-CY1JF000J | J | 0 1/16W | Metal Oxide AA | R1130 | VRS-TW2ED5R6J | J | 5.6 1/4W | Metal Oxide AA |
| R816 | VRS-CA1JF470J | J | 47 1/16W | Metal Oxide AB | R1132 | VRS-CY1JF000J | J | 0 1/16W | Metal Oxide AA |
| R819 | VRS-CY1JF000J | J | 0 1/16W | Metal Oxide AA | R1133 | VRS-CY1JF223F | J | 22k 1/16W | Metal Oxide AA |
| R826 | VRS-CY1JF101J | J | 100 1/16W | Metal Oxide AA | R1134 | VRS-CY1JF822F | J | 8.2k 1/16W | Metal Oxide AA |
| R831 | VRS-CY1JF102J | J | 1.0k 1/16W | Metal Oxide AA | R1135 | VRS-CY1JF561J | J | 560 1/16W | Metal Oxide AA |
| | | | | | R1136 | VRS-CY1JF000J | J | 0 1/16W | Metal Oxide AA |
| | | | | | R1137 | VRS-CY1JF000J | J | 0 1/16W | Metal Oxide AA |
| | | | | | R1138 | VRS-CY1JF000J | J | 0 1/16W | Metal Oxide AA |
| | | | | | R1202 | VRS-CB1JF220J | J | 22 1/16W | Metal Oxide AC |

| Ref. No. | Part No. | ★ | Description | Code |
|----------|----------|---|-------------|------|
|----------|----------|---|-------------|------|

**DUNTKA077FE08
MAIN UNIT (Continued)**

| | | | | | |
|-------|---------------|--------|-------|-------------|----|
| R1203 | VRS-CA1JF220J | J 22 | 1/16W | Metal Oxide | AA |
| R1204 | VRS-CB1JF220J | J 22 | 1/16W | Metal Oxide | AC |
| R1205 | VRS-CA1JF220J | J 22 | 1/16W | Metal Oxide | AA |
| R1206 | VRS-CB1JF220J | J 22 | 1/16W | Metal Oxide | AC |
| R1207 | VRS-CA1JF220J | J 22 | 1/16W | Metal Oxide | AA |
| R1208 | VRS-CY1JF560J | J 56 | 1/16W | Metal Oxide | AA |
| R1209 | VRS-CA1JF220J | J 22 | 1/16W | Metal Oxide | AA |
| R1210 | VRS-CY1JF220J | J 22 | 1/16W | Metal Oxide | AA |
| R1211 | VRS-CY1JF221J | J 220 | 1/16W | Metal Oxide | AA |
| R1212 | VRS-CY1JF000J | J 0 | 1/16W | Metal Oxide | AA |
| R1214 | VRS-CB1JF101J | J 100 | 1/16W | Metal Oxide | AA |
| R1217 | VRS-CY1JF101J | J 100 | 1/16W | Metal Oxide | AA |
| R1218 | VRS-CA1JF101J | J 100 | 1/16W | Metal Oxide | AA |
| R1220 | VRS-CY1JF472J | J 4.7k | 1/16W | Metal Oxide | AA |
| R1221 | VRS-CB1JF332J | J 3.3k | 1/16W | Metal Oxide | AC |
| R1222 | VRS-CB1JF101J | J 100 | 1/16W | Metal Oxide | AA |
| R1223 | VRS-CA1JF101J | J 100 | 1/16W | Metal Oxide | AA |
| R1225 | VRS-CY1JF472J | J 4.7k | 1/16W | Metal Oxide | AA |
| R1228 | VRS-CY1JF000J | J 0 | 1/16W | Metal Oxide | AA |
| R1229 | VRS-CY1JF103J | J 10k | 1/16W | Metal Oxide | AA |
| R1230 | VRS-CY1JF562J | J 5.6k | 1/16W | Metal Oxide | AA |
| R1232 | VRS-CY1JF101J | J 100 | 1/16W | Metal Oxide | AA |
| R1233 | VRS-CY1JF101J | J 100 | 1/16W | Metal Oxide | AA |
| R1234 | VRS-CY1JF472J | J 4.7k | 1/16W | Metal Oxide | AA |
| R1235 | VRS-CB1JF473J | J 47k | 1/16W | Metal Oxide | AC |
| R1236 | VRS-CB1JF473J | J 47k | 1/16W | Metal Oxide | AC |
| R2001 | VRS-CY1JF102J | J 1.0k | 1/16W | Metal Oxide | AA |
| R2002 | VRS-CY1JF102J | J 1.0k | 1/16W | Metal Oxide | AA |
| R2003 | VRS-CY1JF223J | J 22k | 1/16W | Metal Oxide | AA |
| R2004 | VRS-CY1JF223J | J 22k | 1/16W | Metal Oxide | AA |
| R2007 | VRS-CY1JF223J | J 22k | 1/16W | Metal Oxide | AA |
| R2008 | VRS-CY1JF101J | J 100 | 1/16W | Metal Oxide | AA |
| R2009 | VRS-CY1JF102J | J 1.0k | 1/16W | Metal Oxide | AA |
| R2010 | VRS-CY1JF101J | J 100 | 1/16W | Metal Oxide | AA |
| R2011 | VRS-CB1JF101J | J 100 | 1/16W | Metal Oxide | AA |
| R2014 | VRS-CA1JF103J | J 10k | 1/16W | Metal Oxide | AA |
| R2016 | VRS-CA1JF223J | J 22k | 1/16W | Metal Oxide | AA |
| R2018 | VRS-CA1JF101J | J 100 | 1/16W | Metal Oxide | AA |
| R2019 | VRS-CB1JF331J | J 330 | 1/16W | Metal Oxide | AC |
| R2025 | VRS-CY1JF103J | J 10k | 1/16W | Metal Oxide | AA |
| R2028 | VRS-CB1JF102J | J 1.0k | 1/16W | Metal Oxide | AA |
| R2031 | VRS-CY1JF101J | J 100 | 1/16W | Metal Oxide | AA |
| R2032 | VRS-CY1JF471J | J 470 | 1/16W | Metal Oxide | AA |
| R2033 | VRS-CY1JF105J | J 1.0M | 1/16W | Metal Oxide | AA |
| R2035 | VRS-CY1JF102J | J 1.0k | 1/16W | Metal Oxide | AA |
| R2041 | VRS-CA1JF101J | J 100 | 1/16W | Metal Oxide | AA |
| R2042 | VRS-CY1JF101J | J 100 | 1/16W | Metal Oxide | AA |
| R2045 | VRS-CY1JF223J | J 22k | 1/16W | Metal Oxide | AA |
| R2047 | VRS-CY1JF223J | J 22k | 1/16W | Metal Oxide | AA |
| R2048 | VRS-CY1JF332J | J 3.3k | 1/16W | Metal Oxide | AA |
| R2049 | VRS-CY1JF332J | J 3.3k | 1/16W | Metal Oxide | AA |
| R2050 | VRS-CY1JF562J | J 5.6k | 1/16W | Metal Oxide | AA |
| R2051 | VRS-CY1JF101J | J 100 | 1/16W | Metal Oxide | AA |
| R2052 | VRS-CY1JF101J | J 100 | 1/16W | Metal Oxide | AA |
| R2053 | VRS-CY1JF104J | J 100k | 1/16W | Metal Oxide | AA |
| R2054 | VRS-CY1JF333J | J 33k | 1/16W | Metal Oxide | AA |
| R2055 | VRS-CY1JF103J | J 10k | 1/16W | Metal Oxide | AA |
| R2056 | VRS-CY1JF101J | J 100 | 1/16W | Metal Oxide | AA |
| R2057 | VRS-CY1JF103J | J 10k | 1/16W | Metal Oxide | AA |
| R2058 | VRS-CY1JF474J | J 470k | 1/16W | Metal Oxide | AA |
| R2059 | VRS-CY1JF223J | J 22k | 1/16W | Metal Oxide | AA |
| R2060 | VRS-CB1JF101J | J 100 | 1/16W | Metal Oxide | AA |
| R2061 | VRS-CY1JF223J | J 22k | 1/16W | Metal Oxide | AA |
| R2062 | VRS-CY1JF333J | J 33k | 1/16W | Metal Oxide | AA |
| R2063 | VRS-CY1JF333J | J 33k | 1/16W | Metal Oxide | AA |
| R2067 | VRS-CY1JF101J | J 100 | 1/16W | Metal Oxide | AA |
| R2068 | VRS-CY1JF101J | J 100 | 1/16W | Metal Oxide | AA |
| R2069 | VRS-CY1JF000J | J 0 | 1/16W | Metal Oxide | AA |
| R2074 | VRS-CY1JF000J | J 0 | 1/16W | Metal Oxide | AA |
| R2075 | VRS-CY1JF000J | J 0 | 1/16W | Metal Oxide | AA |
| R2076 | VRS-CY1JF000J | J 0 | 1/16W | Metal Oxide | AA |

| Ref. No. | Part No. | ★ | Description | Code |
|----------|----------|---|-------------|------|
|----------|----------|---|-------------|------|

MISCELLANEOUS PARTS

| | | | | |
|--------|---------------|---|------------------|----|
| FB702 | RBLN-0051TAZZ | J | Ferrite Bead | AC |
| FB703 | RBLN-0051TAZZ | J | Ferrite Bead | AC |
| FB704 | RBLN-0051TAZZ | J | Ferrite Bead | AC |
| FB705 | RBLN-0095CEZZ | J | Ferrite Bead | AD |
| FB706 | RBLN-0051TAZZ | J | Ferrite Bead | AC |
| FB708 | RBLN-0095CEZZ | J | Ferrite Bead | AD |
| FB709 | RBLN-0090CEZZ | J | Ferrite Bead | AD |
| FB801 | RBLN-0090CEZZ | J | Ferrite Bead | AD |
| FB802 | RBLN-0090CEZZ | J | Ferrite Bead | AD |
| FB901 | RBLN-0006TAZZ | J | Ferrite Bead | AB |
| FB1201 | RBLN-0090CEZZ | J | Ferrite Bead | AD |
| FB1202 | RBLN-0006TAZZ | J | Ferrite Bead | AB |
| FB1203 | RBLN-0076TAZZ | J | Ferrite Bead | AC |
| P301 | QPLGN0278GEZZ | J | Plug, 2-pin | AA |
| P701 | QPLGN1178GEZZ | J | Plug, 11-pin | AC |
| P751 | QPLGN0155FJZZ | J | Plug, 3-pin (HV) | AE |
| P752 | QPLGN0155FJZZ | J | Plug, 3-pin (HV) | AE |
| P2002 | QPLGN1320REZZ | J | Plug, 13-pin | AC |
| P2003 | QPLGN0520REZZ | J | Plug, 5-pin | AB |
| P2004 | QPLGN0420REZZ | J | Plug, 4-pin | AA |
| SC401 | QSOCN0464FJZZ | J | Socket, 50-pin | AH |
| SC1201 | QSOCN0461FJZZ | J | Socket, 53-pin | AH |
| SC1203 | QSOCN0199FJZZ | J | Socket, 20-pin | AE |

| Ref. No. | Part No. | ★ | Description | Code |
|----------|----------|---|-------------|------|
|----------|----------|---|-------------|------|

DUNTK0136DE02 TERMINAL UNIT

TUNER

NOTE: THE PARTS HERE SHOWN ARE SUPPLIED AS AN ASSEMBLY BUT NOT INDEPENDENTLY.

| | | | | |
|--------|---------------|---|-------|----|
| TU3201 | VTUVT2U5CD553 | J | Tuner | BD |
|--------|---------------|---|-------|----|

INTEGRATED CIRCUITS

| | | | | |
|--------|---------------|--|----------|----|
| IC3401 | VHITC4053BF1E | | TC4053BF | AF |
|--------|---------------|--|----------|----|

TRANSISTORS

| | | | | |
|-------|---------------|---|-----------|----|
| Q3201 | VSDTC144EE/-1 | J | DTC144EE | AA |
| Q3202 | VSDTC144EE/-1 | J | DTC144EE | AA |
| Q3203 | VSDTC144EE/-1 | J | DTC144EE | AA |
| Q3204 | VS2SC2712Y/-1 | J | 2SC2712Y | AB |
| Q3205 | VS2SC3928AR-1 | J | 2SC3928AR | AB |
| Q3301 | VS2SC3928AR-1 | J | 2SC3928AR | AB |
| Q3401 | VS2SC3928AR-1 | J | 2SC3928AR | AB |
| Q3402 | VS2SC3928AR-1 | J | 2SC3928AR | AB |
| Q3403 | VSDTC144EE/-1 | J | DTC144EE | AA |
| Q3404 | VS2SK1467//-1 | J | 2SK1467 | AE |
| Q3405 | VS2SK1467//-1 | J | 2SK1467 | AE |
| Q3420 | VSDTC314TK/-1 | J | DTC314TK | AC |
| Q3421 | VSDTC314TK/-1 | J | DTC314TK | AC |
| Q3422 | VSUMG4/////1 | J | UMG4 | AC |

DIODES

| | | | | |
|-------|---------------|---|-------------|----|
| D3401 | RH-EX1271CEZZ | J | Zener Diode | AB |
| D3402 | RH-EX1271CEZZ | J | Zener Diode | AB |
| D3403 | RH-EX1271CEZZ | J | Zener Diode | AB |

COILS

| | | | | |
|-------|---------------|---|---------------|----|
| L3201 | VP-1M220J2R9N | J | Peaking 22µH | AC |
| L3202 | RCiLC0141CEZZ | J | Coil | AF |
| L3401 | VP-1M101J7R7N | J | Peaking 100µH | AC |

CAPACITORS

| | | | | |
|-------|---------------|---|------------------------|----|
| C3201 | VCKYCY1CF104Z | J | 0.1 16V Ceramic | AA |
| C3202 | VCEA4U0JN338M | J | 3300 6.3V Electrolytic | AE |
| C3203 | VCKYCY1HB103K | J | 0.01 50V Ceramic | AA |
| C3204 | VCKYCY1HB102K | J | 1000p 50V Ceramic | AA |
| C3205 | VCCCCY1HH330J | J | 33p 50V Ceramic | AA |
| C3207 | VCCCCY1HH330J | J | 33p 50V Ceramic | AA |
| C3208 | VCKYCY1CF104Z | J | 0.1 16V Ceramic | AA |
| C3209 | VCKYCY1HB102K | J | 1000p 50V Ceramic | AA |
| C3301 | VCE9PF1CW106M | J | 10 16V Elect.(N.P) | AC |
| C3302 | VCE9PF1CW106M | J | 10 16V Elect.(N.P) | AC |
| C3303 | VCKYCY1CF104Z | J | 0.1 16V Ceramic | AA |
| C3306 | VCKYCY1HB102K | J | 1000p 50V Ceramic | AA |
| C3311 | RC-EZ0417CEZZ | J | 150 16V Electrolytic | AD |
| C3312 | RC-EZ0417CEZZ | J | 150 16V Electrolytic | AD |
| C3402 | VCKYCY1EF104Z | J | 0.1 25V Ceramic | AA |
| C3403 | VCEAPW1CN477M | J | 470 16V Electrolytic | AE |
| C3404 | VCKYCY1CF104Z | J | 0.1 16V Ceramic | AA |
| C3405 | VCEAPF0JW336M | J | 33 6.3V Electrolytic | AB |
| C3406 | RC-KZ1025CEZZ | J | 1.0 10V Ceramic | AB |
| C3407 | VCEAPF0JW226M | J | 22 6.3V Electrolytic | AB |
| C3420 | VCE9PF1CW106M | J | 10 16V Elect.(N.P) | AC |
| C3421 | VCE9PF1CW106M | J | 10 16V Elect.(N.P) | AC |
| C3422 | VCKYCY1EF104Z | J | 0.1 25V Ceramic | AA |
| C3423 | VCEAPF1CW107M | J | 100 16V Electrolytic | AD |
| C3424 | RC-KZ1025CEZZ | J | 1.0 10V Ceramic | AB |

RESISTORS

| | | | | |
|-------|---------------|---|------------------------|----|
| R3201 | VRS-CY1JF102J | J | 1.0k 1/16W Metal Oxide | AA |
| R3202 | VRS-CA1JF561J | J | 560 1/16W Metal Oxide | AA |
| R3203 | VRS-CY1JF102J | J | 1.0k 1/16W Metal Oxide | AA |
| R3204 | VRS-CY1JF102J | J | 1.0k 1/16W Metal Oxide | AA |
| R3205 | VRS-CY1JF153J | J | 15k 1/16W Metal Oxide | AA |
| R3206 | VRS-CY1JF332J | J | 3.3k 1/16W Metal Oxide | AA |
| R3207 | VRS-CY1JF152J | J | 1.5k 1/16W Metal Oxide | AA |
| R3208 | VRS-CY1JF331J | J | 330 1/16W Metal Oxide | AA |
| R3209 | VRS-CY1JF102J | J | 1.0k 1/16W Metal Oxide | AA |
| R3301 | VRS-CY1JF104J | J | 100k 1/16W Metal Oxide | AA |

| Ref. No. | Part No. | ★ | Description | Code |
|----------|----------|---|-------------|------|
|----------|----------|---|-------------|------|

| | | | | |
|-------|---------------|---|------------------------|----|
| R3302 | VRS-CY1JF102J | J | 1.0k 1/16W Metal Oxide | AA |
| R3303 | VRS-CY1JF104J | J | 100k 1/16W Metal Oxide | AA |
| R3304 | VRS-CY1JF102J | J | 1.0k 1/16W Metal Oxide | AA |
| R3305 | VRS-TQ2BD750J | J | 75 1/8W Metal Oxide | AA |
| R3306 | VRS-CY1JF101J | J | 100 1/16W Metal Oxide | AA |
| R3308 | VRS-CY1JF000J | J | 0 1/16W Metal Oxide | AA |
| R3310 | VRS-CY1JF000J | J | 0 1/16W Metal Oxide | AA |
| R3313 | VRS-CY1JF000J | J | 0 1/16W Metal Oxide | AA |
| R3314 | VRS-CY1JF101J | J | 100 1/16W Metal Oxide | AA |
| R3315 | VRS-CY1JF000J | J | 0 1/16W Metal Oxide | AA |
| R3319 | VRS-TQ2BD750J | J | 75 1/8W Metal Oxide | AA |
| R3321 | VRS-CY1JF822J | J | 8.2k 1/16W Metal Oxide | AA |
| R3323 | VRS-CY1JF101J | J | 100 1/16W Metal Oxide | AA |
| R3324 | VRS-CY1JF102J | J | 1.0k 1/16W Metal Oxide | AA |
| R3329 | VRS-CY1JF101J | J | 100 1/16W Metal Oxide | AA |
| R3330 | VRS-TX2HF331J | J | 330 1/2W Metal Oxide | AB |
| R3331 | VRS-TX2HF331J | J | 330 1/2W Metal Oxide | AB |
| R3333 | VRS-TV1JD000J | J | 0 1/16W Metal Oxide | AA |
| R3401 | VRS-TQ2BD750J | J | 75 1/8W Metal Oxide | AA |
| R3402 | VRS-CY1JF101J | J | 100 1/16W Metal Oxide | AA |
| R3404 | VRS-CY1JF101J | J | 100 1/16W Metal Oxide | AA |
| R3405 | VRS-CY1JF000J | J | 0 1/16W Metal Oxide | AA |
| R3409 | VRS-CY1JF104J | J | 100k 1/16W Metal Oxide | AA |
| R3410 | VRS-TQ2BD750J | J | 75 1/8W Metal Oxide | AA |
| R3411 | VRS-CY1JF680J | J | 68 1/16W Metal Oxide | AA |
| R3412 | VRS-CY1JF680J | J | 68 1/16W Metal Oxide | AA |
| R3413 | VRS-CY1JF223J | J | 22k 1/16W Metal Oxide | AA |
| R3414 | VRS-CY1JF101J | J | 100 1/16W Metal Oxide | AA |
| R3415 | VRS-CY1JF562J | J | 5.6k 1/16W Metal Oxide | AA |
| R3416 | VRS-CY1JF272J | J | 2.7k 1/16W Metal Oxide | AA |
| R3420 | VRS-CY1JF750J | J | 75 1/16W Metal Oxide | AA |
| R3421 | VRS-CY1JF750J | J | 75 1/16W Metal Oxide | AA |
| R3422 | VRS-CY1JF750J | J | 75 1/16W Metal Oxide | AA |
| R3423 | VRS-CY1JF101J | J | 100 1/16W Metal Oxide | AA |
| R3424 | VRS-CY1JF101J | J | 100 1/16W Metal Oxide | AA |
| R3425 | VRS-CY1JF101J | J | 100 1/16W Metal Oxide | AA |
| R3426 | VRS-CY1JF102J | J | 1.0k 1/16W Metal Oxide | AA |
| R3427 | VRS-CY1JF102J | J | 1.0k 1/16W Metal Oxide | AA |
| R3428 | VRS-CY1JF103J | J | 10k 1/16W Metal Oxide | AA |
| R3429 | VRS-CY1JF103J | J | 10k 1/16W Metal Oxide | AA |
| R3431 | VRS-CY1JF104J | J | 100k 1/16W Metal Oxide | AA |
| R3432 | VRS-CY1JF104J | J | 100k 1/16W Metal Oxide | AA |
| R3435 | VRS-CY1JF103J | J | 10k 1/16W Metal Oxide | AA |
| R3436 | VRS-CY1JF102J | J | 1.0k 1/16W Metal Oxide | AA |
| R3704 | VRS-CY1JF000J | J | 0 1/16W Metal Oxide | AA |

MISCELLANEOUS PARTS

| | | | | |
|---------|---------------|---|-----------------------|----|
| △ F3701 | QFS-C1223CEZZ | J | Fuse 1.6A | AD |
| △ F3702 | QFS-C1223CEZZ | J | Fuse 1.6A | AD |
| △ F3751 | QFS-C2023CEZZ | J | Fuse 2.0A | AD |
| FH3701 | QFSDH1002CEZZ | J | Fuse Holder | AA |
| FH3702 | QFSDH1002CEZZ | J | Fuse Holder | AA |
| FH3703 | QFSDH1002CEZZ | J | Fuse Holder | AA |
| FH3704 | QFSDH1002CEZZ | J | Fuse Holder | AA |
| FH3751 | QFSDH1002CEZZ | J | Fuse Holder | AA |
| FH3752 | QFSDH1002CEZZ | J | Fuse Holder | AA |
| J3401 | QJAKE0200CE02 | J | AV-IN1, Audio (R) | AE |
| J3402 | QJAKE0200CE09 | J | AV-IN1, Audio (L) | AE |
| J3403 | QJAKE0200CE04 | J | AV-IN1, Video | AE |
| J3404 | QJAKE0200CE02 | J | Component, PR | AE |
| J3405 | QJAKE0200CE06 | J | Component, PB | AE |
| J3406 | QJAKE0200CE05 | J | Component, Y | AE |
| J3407 | QJAKE0200CE02 | J | AV-IN2/OUT, Audio (R) | AE |
| J3408 | QJAKE0200CE09 | J | AV-IN2/OUT, Audio (L) | AE |
| J3409 | QJAKE0200CE04 | J | AV-IN2/OUT, Video | AE |
| J3410 | QJAKJ0046CEZZ | J | Jack, Headphone | AE |
| J3701 | QJAKE0193CEZZ | J | Power Input (DC12V) | AK |
| P3203 | QPLGN0280GEZZ | J | Plug 2-pin | AB |
| P3204 | QPLGN0280GEZZ | J | Plug 2-pin | AB |
| P3701 | QPLGN1178GEZZ | J | Plug 11-pin | AC |
| SC3301 | QSOC0456CEZZ | J | AV Input1, S-Video | AE |
| SC3401 | QSOCN0464FJZZ | J | Socket 50-pin | AH |

| Ref. No. | Part No. | ★ | Description | Code |
|----------|----------|---|-------------|------|
|----------|----------|---|-------------|------|

DUNTKA0137DE02 OPERATION UNIT

DIODES

| | | | | |
|-------|---------------|---|-------------|----|
| D4009 | RH-EX0879CEZZ | J | Zener Diode | AD |
| D4010 | RH-EX0879CEZZ | J | Zener Diode | AD |
| D4018 | RH-EX1283CEZZ | J | Zener Diode | AB |
| D4019 | RH-EX1283CEZZ | J | Zener Diode | AB |

CAPACITORS

| | | | | |
|-------|---------------|---|------------------|----|
| C4001 | VCCCCY1HH471J | J | 470p 50V Ceramic | AA |
| C4002 | VCCCCY1HH471J | J | 470p 50V Ceramic | AA |

RESISTORS

| | | | | |
|-------|---------------|---|------------------------|----|
| R4005 | VRS-CY1JF123J | J | 12k 1/16W Metal Oxide | AA |
| R4006 | VRS-CY1JF822J | J | 8.2k 1/16W Metal Oxide | AA |
| R4011 | VRS-CY1JF123J | J | 12k 1/16W Metal Oxide | AA |
| R4012 | VRS-CY1JF822J | J | 8.2k 1/16W Metal Oxide | AA |

SWITCHES

| | | | | |
|--------|---------------|---|------------|----|
| S4701 | QSW-S0213CEZZ | J | Main Power | AE |
| SW4002 | QSW-K0087GEZZ | J | CH ▼ | AC |
| SW4003 | QSW-K0087GEZZ | J | CH ▲ | AC |
| SW4004 | QSW-K0087GEZZ | J | MENU | AC |
| SW4006 | QSW-K0087GEZZ | J | TV/VIDEO | AC |
| SW4007 | QSW-K0087GEZZ | J | VOL (+) | AC |
| SW4008 | QSW-K0087GEZZ | J | VOL (-) | AC |

MISCELLANEOUS PARTS

| | | | | |
|-------|---------------|---|-------------|----|
| P4004 | QPLGN0564TAZZ | J | Plug, 5-pin | AC |
|-------|---------------|---|-------------|----|

DUNTKA0138DE02 R/C RECEIVER UNIT

TRANSISTORS

| | | | | |
|-------|---------------|---|----------|----|
| Q4106 | VSDTC144EE/-1 | J | DTC144EE | AA |
| Q4107 | VSUMG4/////1 | J | UMG4 | AC |

DIODEES

| | | | | |
|-------|---------------|---|---------------------|----|
| D4120 | RH-EX1271CEZZ | J | Zener Diode | AB |
| D4121 | RH-EX1271CEZZ | J | Zener Diode | AB |
| D4122 | RH-PX0368CEZZ | J | LED, Power/Stand-by | AE |

CAPACITOR

| | | | | |
|-------|---------------|---|-----------------|----|
| C4120 | VCKYTV1CF105Z | J | 1.0 16V Ceramic | AB |
|-------|---------------|---|-----------------|----|

RESISTORS

| | | | | |
|-------|---------------|---|------------------------|----|
| R4187 | VRS-CY1JF331J | J | 330 1/16W Metal Oxide | AA |
| R4188 | VRS-CY1JF102J | J | 1.0k 1/16W Metal Oxide | AA |
| R4189 | VRS-CY1JF472J | J | 4.7k 1/16W Metal Oxide | AA |
| R4190 | VRS-CY1JF101J | J | 100 1/16W Metal Oxide | AA |

MISCELLANEOUS PARTS

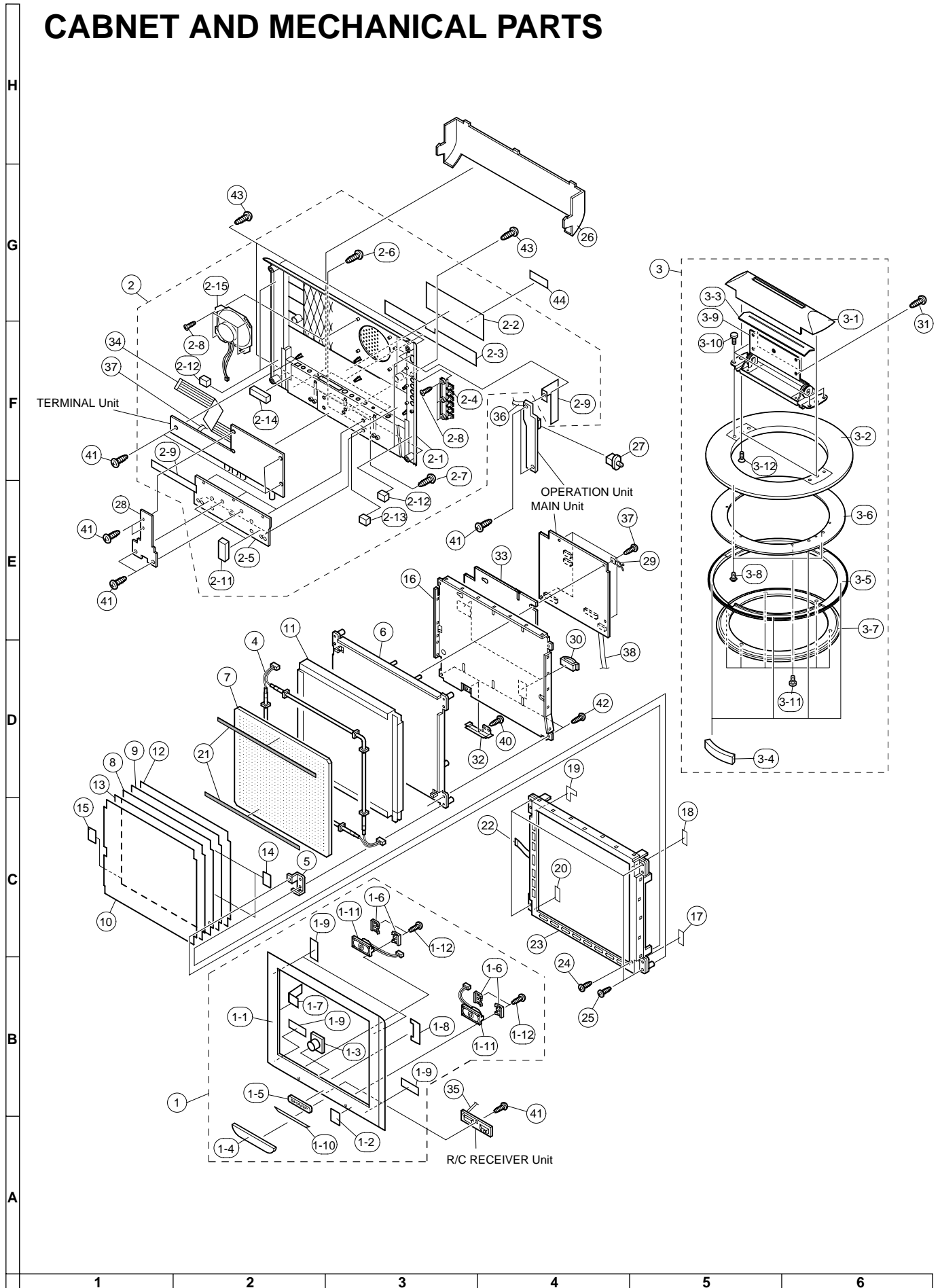
| | | | | |
|---------|---------------|---|--------------|----|
| SC4102 | QPLGN0464TAZZ | J | Plug | AC |
| RMC4101 | RRMCU0239CEZZ | J | R/C Receiver | AE |
| | PSLDM4450CEFW | J | Shield | AE |

| Ref. No. | Part No. | ★ | Description | Code |
|----------|----------|---|-------------|------|
|----------|----------|---|-------------|------|

CABINET PARTS LOCATION

| | | | | |
|------|----------------------|---|-------------------------------|----|
| 1 | CCABA2402CE02 | J | Front Cabinet Ass'y | BF |
| 1-1 | <i>Not Available</i> | - | Front Cabinet | — |
| 1-2 | GCOVA1932CESA | J | IR Filter | |
| 1-3 | GCOVA1857CESA | J | LED Cover | AD |
| 1-4 | GCOVA1900CESA | J | R/C Cover | AC |
| 1-5 | HBDGB3154CESA | J | Badge, SHARP | AF |
| 1-6 | LANGS0130CEFW | J | Angle for Speaker, x4 | AD |
| 1-7 | PSLDC3104CEZZ | J | Shield | AC |
| 1-8 | PSLDC3105CEZZ | J | Shield | AC |
| 1-9 | PSPAH0654CE00 | J | Spacer, x4 | AB |
| 1-10 | PSPAP0055CEZZ | J | Spacer, x1 | AB |
| 1-11 | VSP4030P-44YD | J | Speaker, x2 | AR |
| 1-12 | XEBSD20P05000 | J | Screw, x4 | AA |
| 2 | CCABB2290CE02 | J | Rear Cabinet Ass'y | BE |
| 2-1 | <i>Not Available</i> | - | Rear Cabinet | — |
| 2-2 | HiNDP5819CESA | J | Model Label | |
| 2-3 | HiNDP5679CESA | J | AV Indication Plate | AG |
| 2-4 | JBTN-2047CEKA | J | Operation Button | AF |
| 2-5 | LANGF9601CEFW | J | Fixing Metal | AK |
| 2-6 | LX-BZ3425CEFN | J | Screw, x2 | AA |
| 2-7 | LX-BZ3426CEFN | J | Screw, x3 | AA |
| 2-8 | LX-HZ3064CEFF | J | Screw, x7 | AA |
| 2-9 | PSLDC3106CEZZ | J | Shield | AC |
| 2-10 | PSLDC3107CEZZ | J | Shield | AD |
| 2-11 | PSPAG0364CEZZ | J | Spacer, x2 | AC |
| 2-12 | PSPAG0370CEZZ | J | Spacer, x4 | AB |
| 2-13 | PSPAG0371CEZZ | J | Spacer, x1 | AB |
| 2-14 | QEARZ0022CEZZ | J | Ground-Part | AE |
| 2-15 | RSP-Z0114CEN1 | J | Rear Speaker | AR |
| 3 | CCOVA1854CE02 | J | Stand Ass'y | BK |
| 3-1 | GCOVA1853CESA | J | Top Cover | AH |
| 3-2 | GCOVA1854CESA | J | Rotation Cover | AQ |
| 3-3 | GCOVH9302CEZZ | J | Protection Cover | AE |
| 3-4 | GCOVH9303CE00 | J | Leg Cover | AD |
| 3-5 | GDai-1113CESA | J | Stand, Base | AL |
| 3-6 | LANGF9549CE00 | J | Fixing Metal | AS |
| 3-7 | LANGF9550CE00 | J | Fixing Metal | AP |
| 3-8 | LX-HZ3112CEFD | J | Screw, x2 | AA |
| 3-9 | MHNG-3026CE01 | J | Hinge | BC |
| 3-10 | XBPSD40P07000 | J | Screw, x4 | AA |
| 3-11 | XBPSF40P04000 | J | Screw, x6 | AA |
| 3-12 | XESSF30P08000 | J | Screw, x2 | AA |
| △ 4 | KLMP-0098CEZZ | J | Lamp Unit | BA |
| 5 | LANGQ9208CEFW | J | Fixing Angle | AE |
| 6 | LHLDZ2145CEKZ | J | Light Guide Plate Holder | AU |
| 7 | PGiDM0060CEZZ | J | Light Guide Plate | AZ |
| 8 | PSHEP0207CEZZ | J | ITO Sheet | AX |
| 9 | PSHEP0208CEZZ | J | Diffusion Sheet | AP |
| 10 | PSHEP0209CEZZ | J | Reflection Polarizing Sheet | BG |
| 11 | PSHEP0210CEZZ | J | Reflection Panel | AL |
| 12 | PSHEP0217CEZZ | J | Reflection Sheet | AL |
| 13 | PSHEP0220CEZZ | J | Condenser Sheet | AY |
| 14 | PSLDM4504CEZZ | J | Shield, Copper Film Sheet, x2 | AC |
| 15 | PSLDM4505CEZZ | J | Shield, Copper Film Sheet | AC |
| 16 | PSLDM4604CEFW | J | Shield Case | AN |
| 17 | PSPAZ0364CEZZ | J | Spacer | AB |
| 18 | PSPAZ0365CEZZ | J | Spacer | AB |
| 19 | PSPAZ0367CEZZ | J | Spacer | AD |
| 20 | PSPAZ0368CEZZ | J | Spacer | AD |
| 21 | PSPAZ0377CEZZ | J | Spacer | AD |
| 22 | QCNW-4941CEZZ | J | Connecting Cord | AE |
| 23 | RLCDT0058CEZZ | J | 15" LCD Panel | DQ |
| 24 | XBBSD20P05000 | J | Screw, x1 | AA |
| 25 | XEBSD30P08000 | J | Screw, x4 | AA |
| 26 | GCOVA1858CEKA | J | Terminal Cover | AL |
| 27 | JKNBP1167CEKA | J | Knob, Power | AE |
| 28 | LANGF0104CEFW | J | Reinforcing Angle, for Stand | AF |
| 29 | LHLDW1046CEZZ | J | Wire Holder | AA |

CABINET AND MECHANICAL PARTS



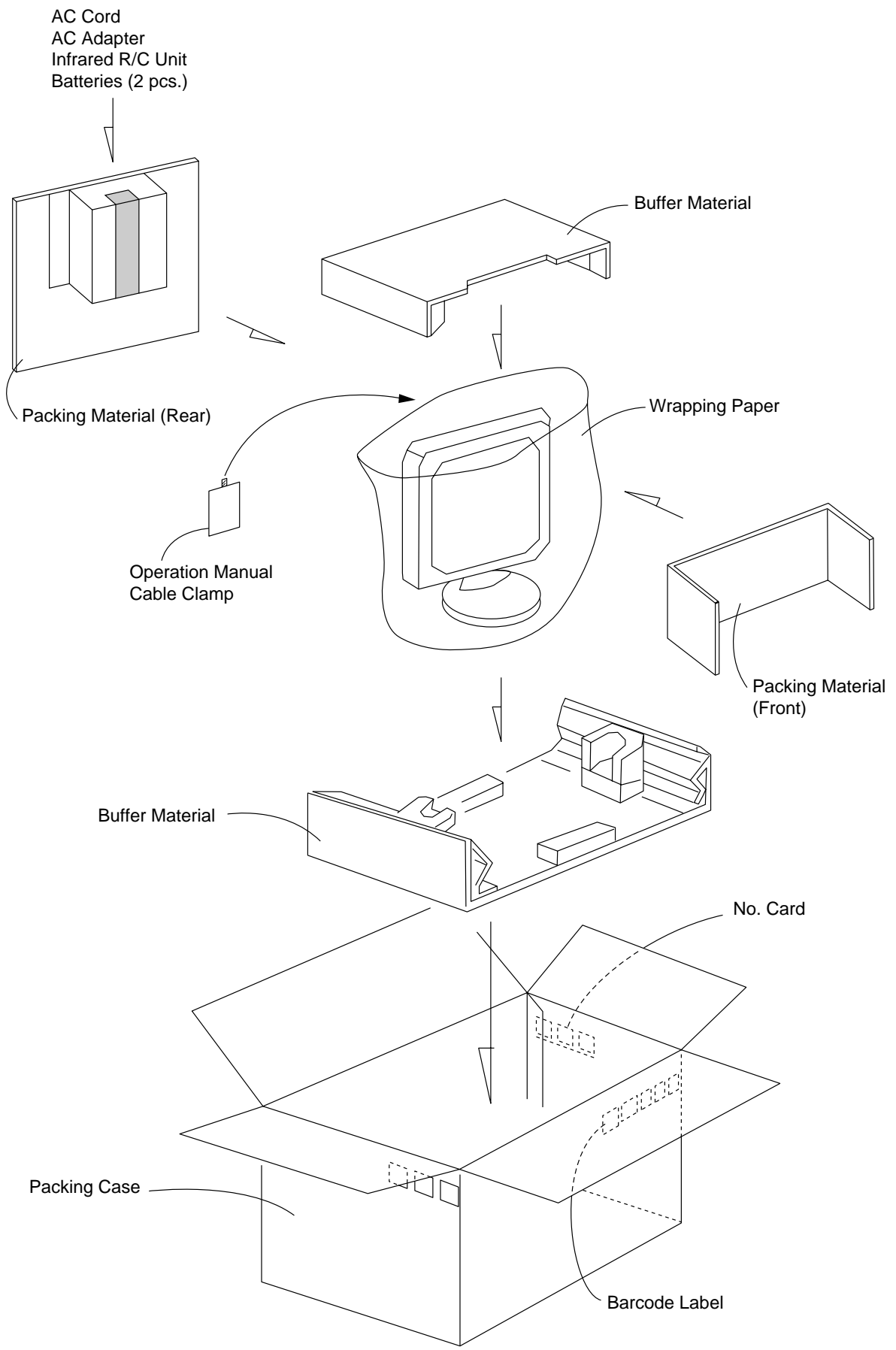
| Ref. No. | Part No. | ★ | Description | Code |
|-------------------------------|---------------|---|------------------|------|
| CABINET PARTS LOCATION | | | | |
| (Continued) | | | | |
| 30 | LHLDW1173CEZZ | J | Wire Holder, x2 | AD |
| 31 | LX-BZ3431CEFN | J | Screw, x4 | AB |
| 32 | PSLDM4482CEFW | J | Shield | AD |
| 33 | PZETZ0019CEZZ | J | Insulating Sheet | AE |
| 34 | QCNW-5555CEZZ | J | Connecting Cord | AL |
| 35 | QCNW-5556CEZZ | J | Connecting Cord | AE |
| 36 | QCNW-5557CEZZ | J | Connecting Cord | AF |
| 37 | QCNW-5558CEZZ | J | Connecting Cord | AH |
| 38 | QPWBHA141CEZZ | J | Connecting Cord | AR |
| 39 | XBBS030P04000 | J | Screw, x2 | AA |
| 40 | XEBS026P06000 | J | Screw, x1 | AA |
| 41 | XEBS030P08000 | J | Screw, x12 | AA |
| 42 | XEBS030P12000 | J | Screw, x2 | AA |
| 43 | XEBS030P14000 | J | Screw, x5 | AA |
| 44 | TLABN0355CEZZ | J | No. Label | AA |

| Ref. No. | Part No. | ★ | Description | Code |
|-----------------------------|---------------|---|-------------------|------|
| SUPPLIED ACCESSORIES | | | | |
| | LHLDW1028GEZZ | J | Cable Clamp, x2 | AB |
| △ | QACCL0020TAZZ | J | AC Cord | AP |
| | RRMCG1558CESA | J | Infrared R/C Unit | AV |
| | TiNS-7193CEZZ | J | Operation Manual | AU |
| △ | UADP-0210CEZZ | J | AC Adapter | BH |

PACKING PARTS (NOT REPLACEMENT ITEM)

| | | | |
|---------------|---|--------------------------|---|
| SPAKC5469CEZZ | - | Packing Case | — |
| SPAKF0405CEZZ | - | Packing Material (Rear) | — |
| SPAKF0488CEZZ | - | Packing Material (Front) | — |
| SPAKP0798CEZZ | - | Wrapping Paper | — |
| SPAKX2903CEZZ | - | Buffer Material | — |
| SSAKA0160CEZZ | - | Polyethylene Bag | — |
| TLABK0001TAZZ | - | No. Card | — |
| TLABN0157CEZZ | - | Barcode Label | — |

PACKING OF THE SET



SHARP

COPYRIGHT © 2001 BY SHARP CORPORATION

ALL RIGHTS RESERVED.

No part of this publication may be reproduced, stored in a retrieval system, or transmitted in any form or by any means, electronic, mechanical, photocopying, recording, or otherwise, without prior written permission of the publisher.